



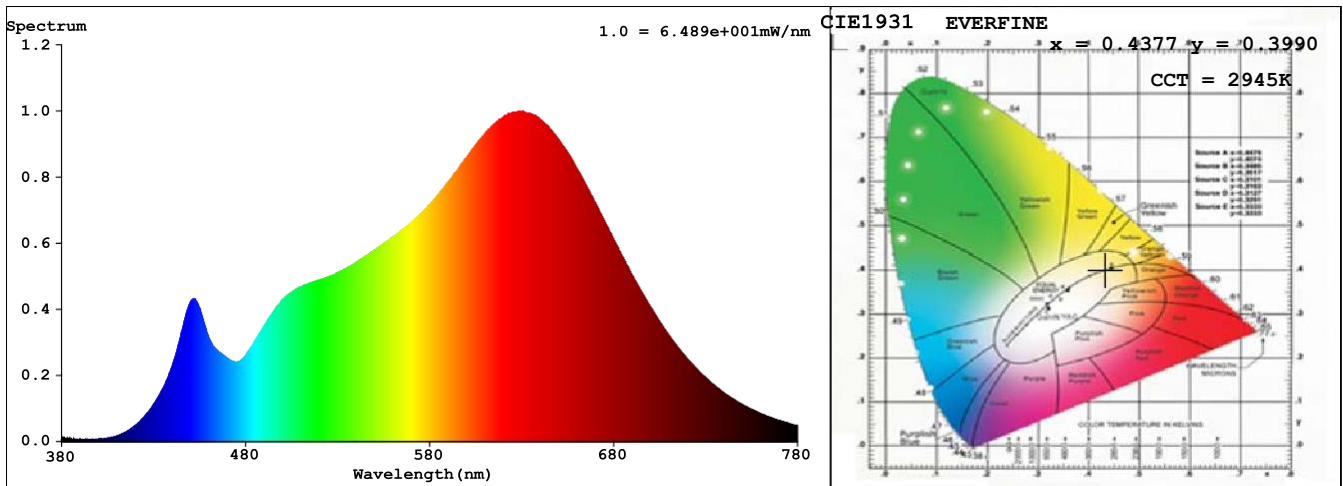
Spectrum Test Report

Sample	: E24N173W30	Date	: 2019-04-17 17:23:06
Specification	: 2835 240LED 12MM 24V 38.4W 3000K IP20 CRI90 1M		
Sample No.	: LD19040302#43	Instrument	: HaasSuite(EVERFINE)
Manufacturer	:	Test by	: Velleman
Assessor	:		
Remark	:		

Test Condition

Temperature	: 25.3Deg	RH	: 65.0%
WL Range	: 380nm-780nm	IP	: 49460 (75%)
Test Mode	: Fast Test	T	: 57 ms
		Sensitivity	: High

Spectrum



Spectral Distribution

CIE1931 Chromaticity Diagram

Colorimetric Parameters

Chromaticity Coordinate: $x = 0.4377$ $y = 0.3990$ / $u' = 0.2533$ $v' = 0.5195$ ($duv = -2.15e-03$)

CCT= 2945K Prcp WL: $L_d = 583.8\text{nm}$ Purity=51.1%

Peak WL: $L_p = 631\text{nm}$ FWHM: =165.0nm Ratio:R=25.5% G=71.2% B=3.3%

Render Index: $R_a = 97.0$ CRI = 95.9 AvgR = 96.0 TM30:Rf=95 Rg=101

R1 =99 R2 =98 R3 =98 R4 =99 R5 =99 R6 =95 R7 =95

R8 =92 R9 =84 R10=97 R11=95 R12=92 R13=99 R14=99 R15=97

LEVEL:OUT WHITE:ANSI_3000K

Photometric & Radiometric Parameters

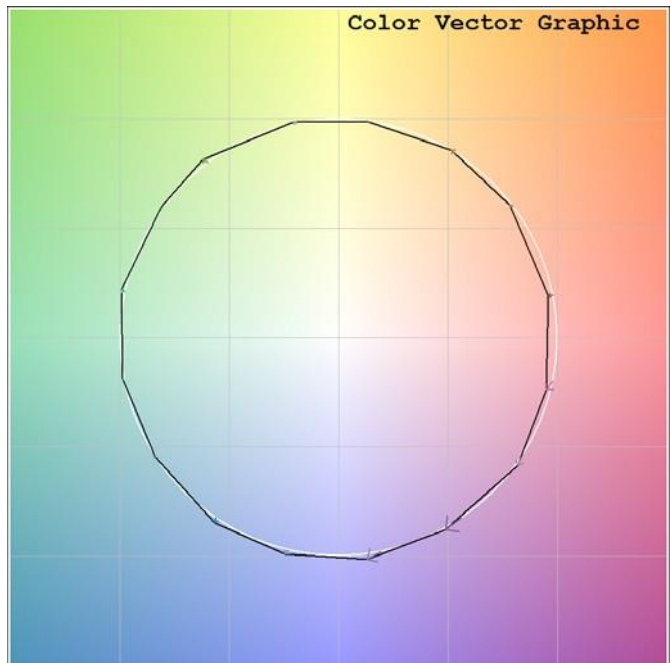
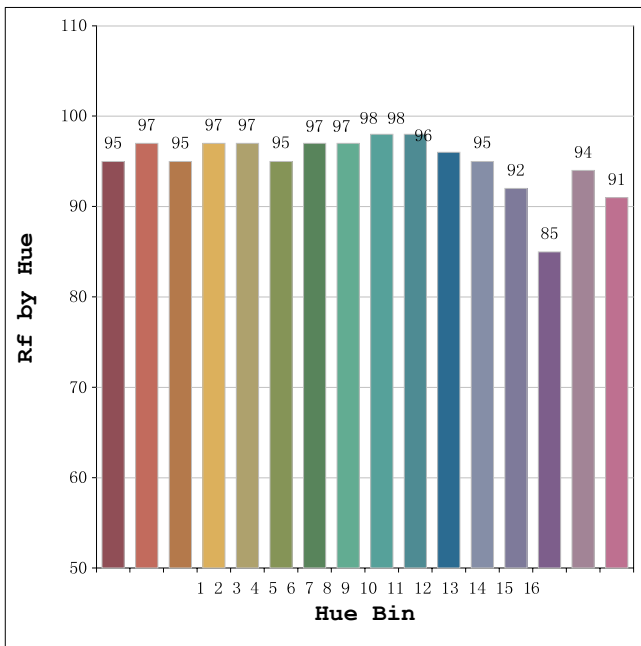
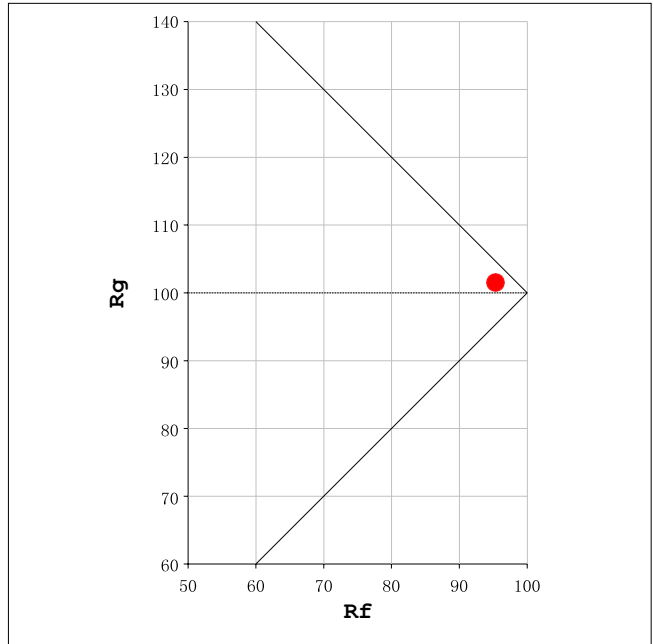
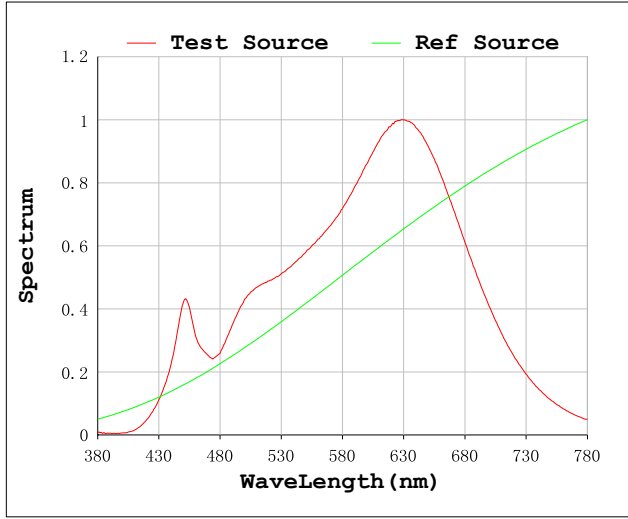
Flux = 3054.1 lm Eff. : 75.50 lm/W Fe = 11.495 W

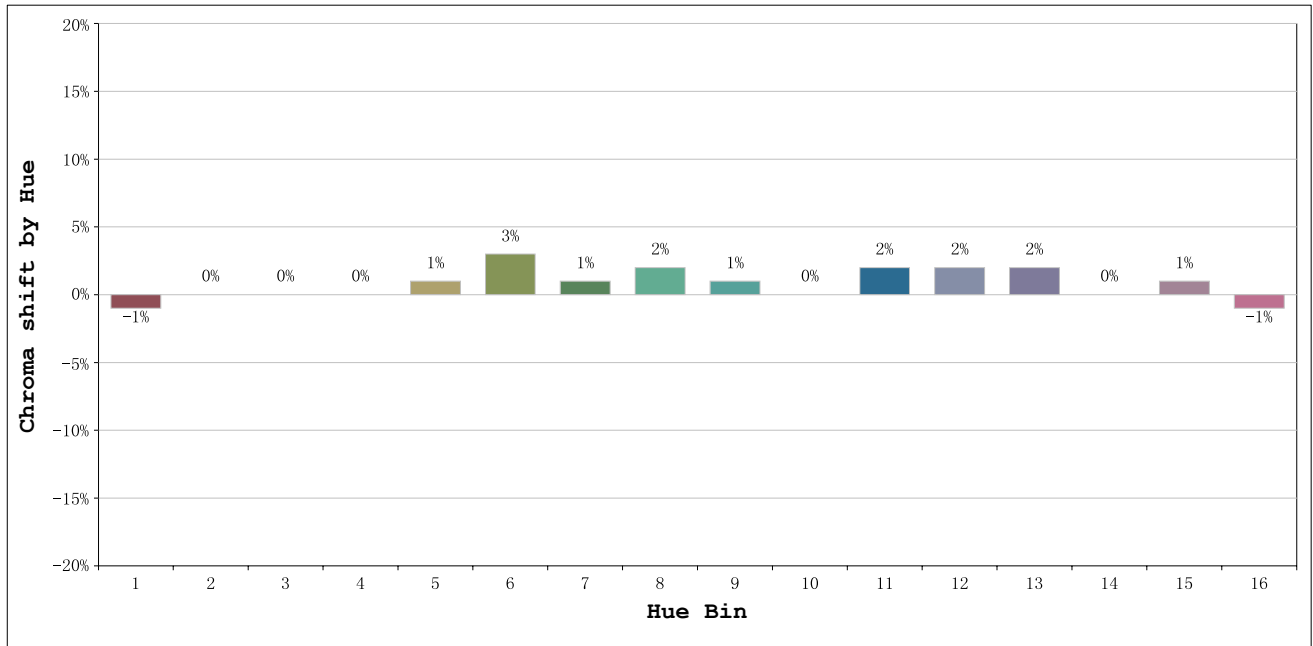
Flux of emitted photons($\mu\text{mol/s}$):57.386 Flu. and blue light ratio:11.71 Fluorescent eff.:261.9

Electrical parameters

V = 24.00 V I = 1.686 A P = 40.45 W PF = 1.000 F=0.00 Hz

Rf: 95 CCT: 2945 K u': 0.2533
 Rg: 101 Duv: -0.0021 v': 0.5195





Hue Bin	Hue Angle	Rf	Graphic shift(%)	
			Chroma	Hue
1	0.0° - 22.5°	95	-1	0
2	22.5° - 45.0°	97	0	1
3	45.0° - 67.5°	95	0	2
4	67.5° - 90.0°	97	0	0
5	90.0° - 112.5°	97	1	1
6	112.5° - 135.0°	95	3	1
7	135.0° - 157.5°	97	1	0
8	157.5° - 180.0°	97	2	0
9	180.0° - 202.5°	98	1	0
10	202.5° - 225.0°	98	0	0
11	225.0° - 247.5°	96	2	1
12	247.5° - 270.0°	95	2	0
13	270.0° - 292.5°	92	2	-6
14	292.5° - 315.0°	85	0	-8
15	315.0° - 337.5°	94	1	-3
16	337.5° - 360.0°	91	-1	-4