



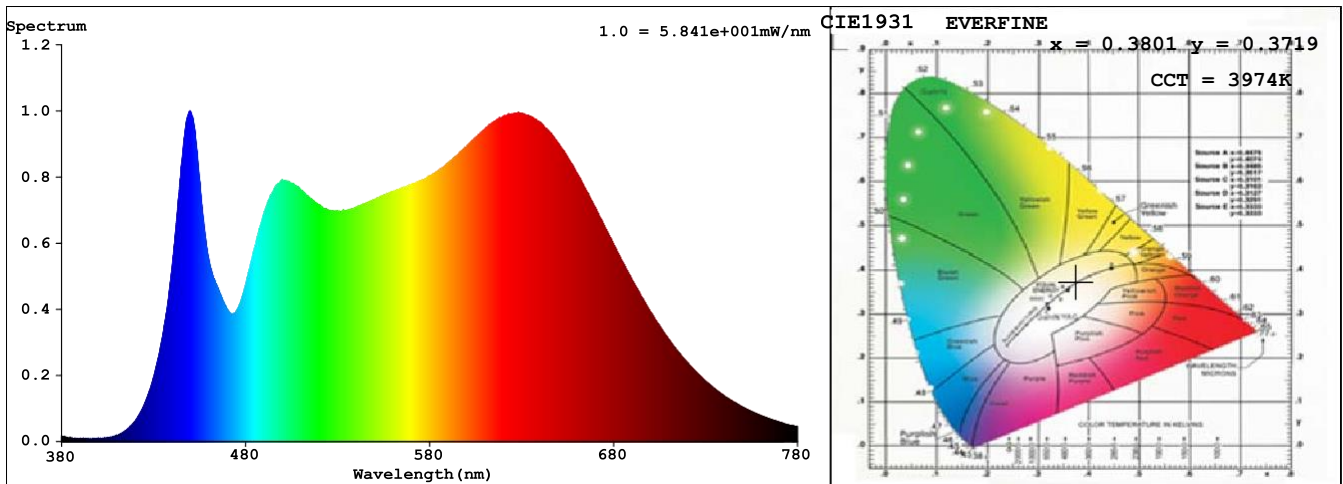
Spectrum Test Report

Sample	: E24N173W40	Date	: 2019-04-17 17:21:18
Specification	: 2835 240LED 12MM 24V 38.4W 4000K IP20 CRI90 1M		
Sample No.	: LD19040302#42	Instrument	: HaasSuite(EVERFINE)
Manufacturer	:	Test by	: Velleman
Assessor	:		
Remark	:		

Test Condition

Temperature	: 25.3Deg	RH	: 65.0%
WL Range	: 380nm-780nm	IP	: 56537 (86%)
Test Mode	: Fast Test	T	: 72 ms
		Sensitivity	: High

Spectrum



Spectral Distribution

CIE1931 Chromaticity Diagram

Colorimetric Parameters

Chromaticity Coordinate: $x = 0.3801$ $y = 0.3719$ / $u' = 0.2268$ $v' = 0.4994$ ($duv = -2.17e-03$)

CCT= 3974K Prcp WL: $L_d = 580.4\text{nm}$ Purity=25.7%

Peak WL: $L_p = 450\text{nm}$ FWHM: $=22.8\text{nm}$ Ratio: R=21.2% G=73.6% B=5.2%

Render Index: $R_a = 95.7$ CRI = 94.5 AvgR = 94.6 TM30: $R_f = 95$ $R_g = 102$

R1 =95 R2 =96 R3 =97 R4 =95 R5 =94 R6 =93 R7 =98

R8 =98 R9 =95 R10=90 R11=91 R12=89 R13=95 R14=98 R15=96

LEVEL:OUT WHITE:ANSI_4000K

Photometric & Radiometric Parameters

Flux = 3324.2 lm Eff. : 83.94 lm/W Fe = 12.432 W

Flux of emitted photons($\mu\text{mol/s}$):60.129 Flu. and blue light ratio:7.027 Fluorescent eff.:274.9

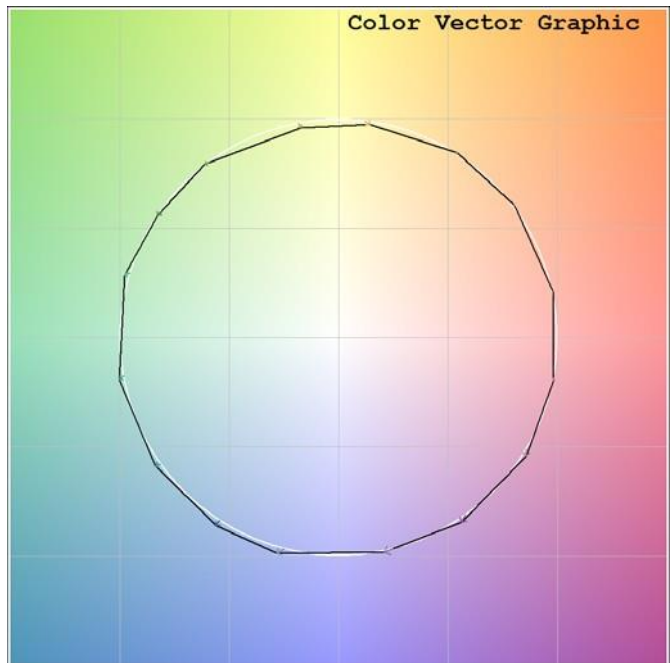
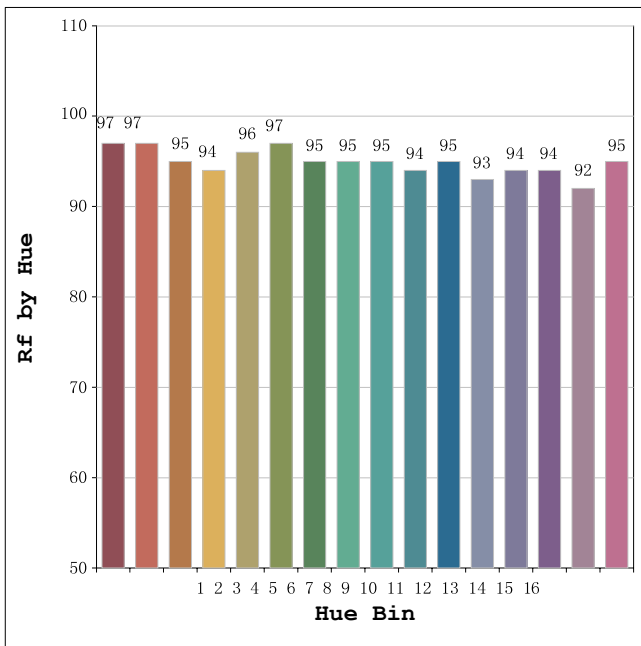
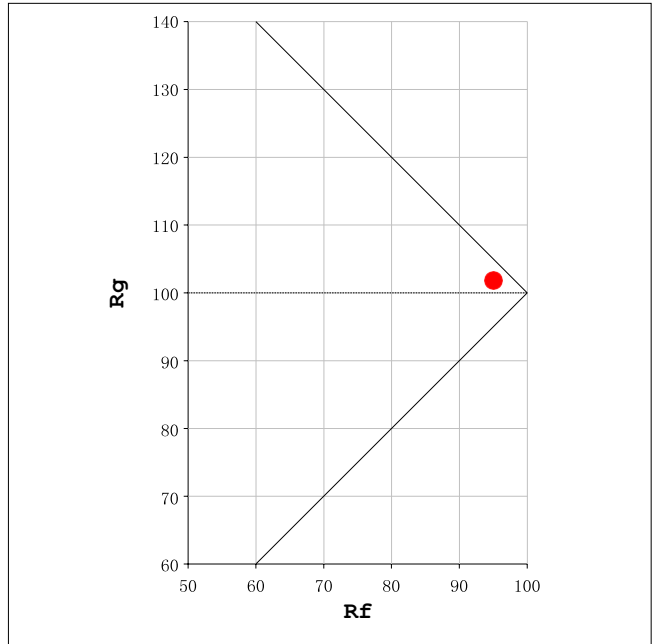
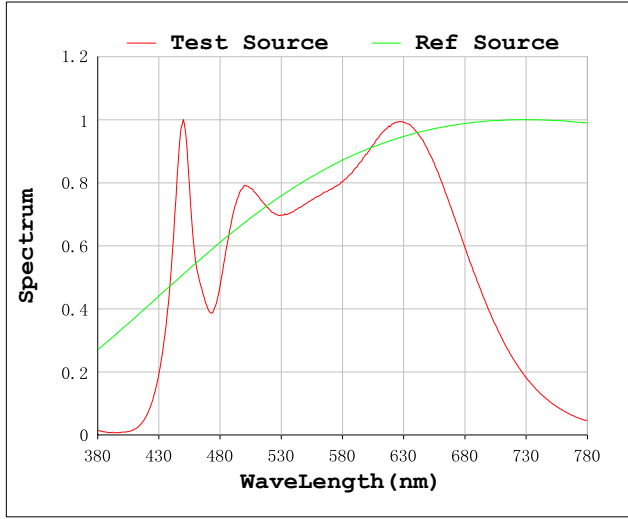
Electrical parameters

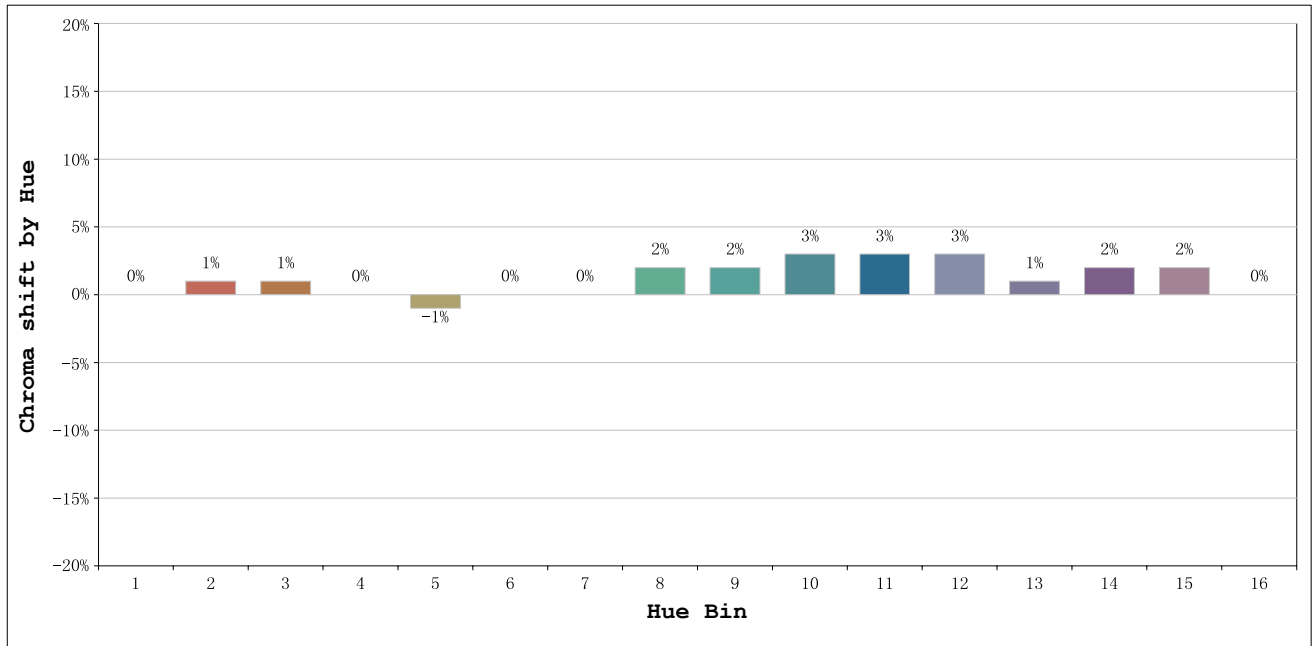
V = 24.00 V I = 1.650 A P = 39.60 W PF = 1.000 F=0.00 Hz

EVERFINE CORPORATION

<http://www.everfine.cn>

Rf: 95 CCT: 3974 K u': 0.2268
 Rg: 102 Duv: -0.0022 v': 0.4994





Hue Bin	Hue Angle	Rf	Graphic shift(%)	
			Chroma	Hue
1	0.0° - 22.5°	97	0	0
2	22.5° - 45.0°	97	1	0
3	45.0° - 67.5°	95	1	0
4	67.5° - 90.0°	94	0	-2
5	90.0° - 112.5°	96	-1	0
6	112.5° - 135.0°	97	0	2
7	135.0° - 157.5°	95	0	2
8	157.5° - 180.0°	95	2	2
9	180.0° - 202.5°	95	2	2
10	202.5° - 225.0°	94	3	0
11	225.0° - 247.5°	95	3	0
12	247.5° - 270.0°	93	3	-2
13	270.0° - 292.5°	94	1	-3
14	292.5° - 315.0°	94	2	-2
15	315.0° - 337.5°	92	2	-2
16	337.5° - 360.0°	95	0	0