

WC224 LIVE INTERNET PUBLISHING



LIVE INTERNET PUBLISHING

2



LIVE INTERNET PUBLISHING

Your console is capable of sending your sensor data to select internet-based weather services. The supported services are shown in the table below:

Hosting Service	Website	Description
Ecowitt Weather	https://www.ecowitt.net	Ecowitt is a new weather server that can host a bunch of sensors that other services do not support.
Weather Underground	https://www.wunderground.com	Weather Underground is a free weather hosting service that allows you to send and view your weather station data real-time, view graphs and gauges, import text data for more detailed analysis and use iPhone, iPad and Android applications available at wunderground.com . Weather Underground is a subsidiary of The Weather Channel and IBM.
Weather Cloud	https://weathercloud.net	Weathercloud is a real-time weather social network formed by observers from around the world.
Weather Observation Website (WOW)	http://wow.metoffice.gov.uk/	WOW is a UK based weather observation website. WOW allows anyone to submit their own weather data, anywhere in the world.
Customized Website		Supports uploading to your customized website, if the website has the same protocol with Wunderground or Ecowitt.

1. Connecting the Weather Station Console to Wi-Fi

To send weather data to these services you must connect your console to the internet via Wi-Fi. The console can only operate using Wi-Fi when the external power adapter is connected and plugged in!

REMARK

If you are testing the setup with the outdoor sensor package nearby and indoor, you may want to consider connecting to Wi-Fi, but not yet configuring any of the weather services. The reason is that while indoor the temperatures and humidity recorded by the outdoor sensor, and as reported to the weather service(s) will reflect indoor conditions, and not outdoor conditions. Therefore, they will be incorrect. Furthermore, the rainfall bucket may be tripped during handling, causing rain to register while it may not actually have been raining. One way to prevent this is to follow all instructions, except to use an incorrect password, on purpose! Then, after final outdoor installation, come back and change the password after clearing console history. That will start uploading to the services with a clean slate.

1.1 Download Mobile Application

Wi-Fi configuration is done using your mobile device, either iOS or Android. Start by downloading the "WS View" application from the Apple App Store or Google Play store, as appropriate for your device.

1.2 Connect the Console to Wi-Fi

Android User

Configure the Device

Now activate the application you have downloaded on your mobile device. The following instructions will generally show screen shots for the Android application side by side.



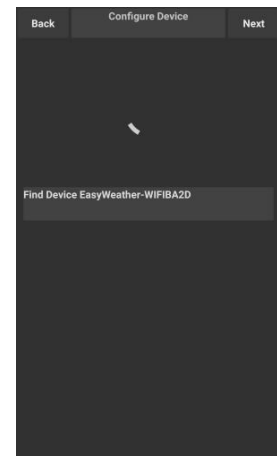
1.

Select the device you have from the device list, then press **Next**.



2.

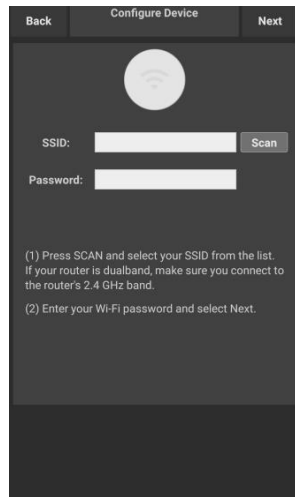
Operate as per the information, tick the box to confirm "completed operation", press **Next**.



3.

Start searching the device. If the device is in your WLAN list, it will jump to the next screen shot.

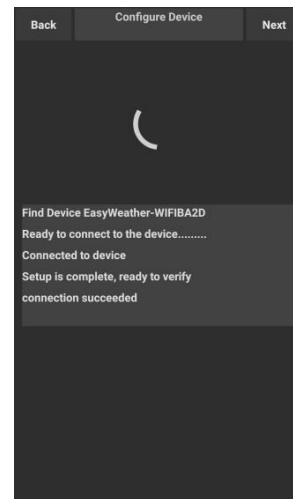
The device named "EasyWeather-WIFI" followed by four characters.



4.

Press **Scan** and select your **SSID** from the list, then enter your Wi-Fi **password** and press **Next**.

If you own a dual band router (2.4 GHz and 5.0 GHz), make sure you connect to the 2.4 GHz band, otherwise it will fail to connect the weather station to Wi-Fi.



5.

Start to connect your phone to the weather station "EasyWeather-WIFI" to your router. Configure successfully it will jump to "**Upload Setting**" screen automatically.

Upload Setting

Your console can send your sensor data to select internet-based weather services: ecowitt.net, Wunderground.com, weathercloud.net, wow.metoffice.gov.uk and Customized Website. The user needs to register at the selected website to get the station ID (or MAC address) and password.

a) Uploading Weather Data to Ecowitt

It is recommended to use the Ecowitt Weather server to monitor and record your sensors data (supports uploading all the sensors data to Ecowitt Weather server). For other weather services, only server-supported data will be uploaded.



1.

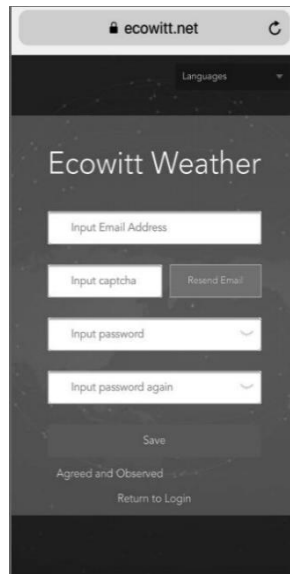
On the **ecowitt.net** uploading page, enable the ON button (displayed blue) and set the uploading interval time.

Press **Save** on the page.

Copy the MAC address (will be used to add the device on the server later).

Press **Register at Ecowitt.net** to open the web browser and to activate option.

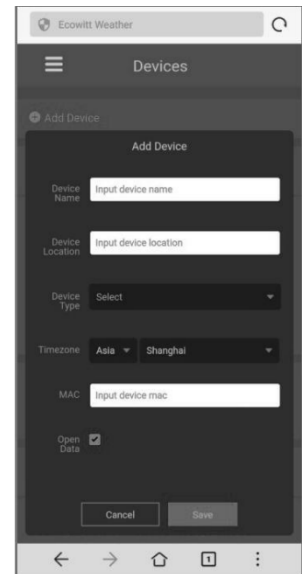
After adding the device and uploading data successfully, if you found the data not reporting to server, press **Response Time** to reset and check the response status.



2.

Finish the registration on the Ecovitt page.

If you have an account and password, press **Return to Login** to login to the website.



3.

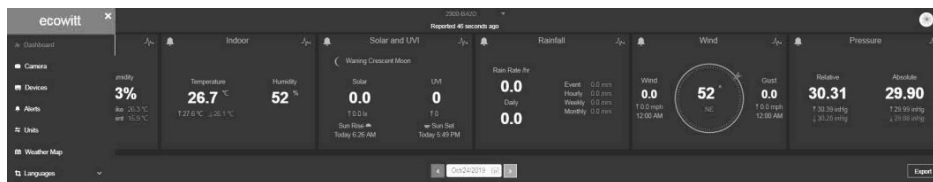
Press the upper left menu button and select **Devices**. Press **Add Device** and enter all the information needed. Press **Save**.

If you tick **Open data**, your weather data can be viewed by other people.

REMARK

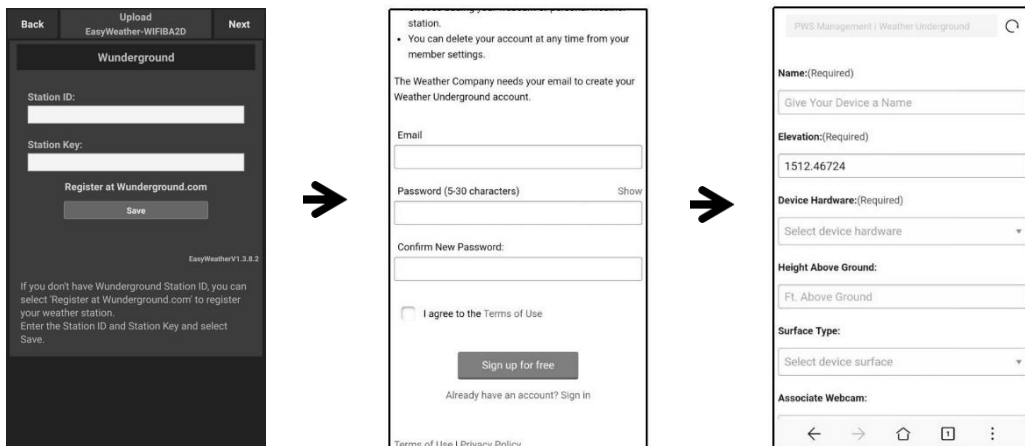
- When selecting the device address on the map, please wait until the map is displayed before selecting your address.
- Please enter the correct time zone to get the correct time. Time will be automatically updated to the Internet time through the Wi-Fi connection.

Once registered, select the dashboard to view your data, as shown below:



Ecowitt.net is a responsive design and mobile-friendly. Simply open the web browser on your mobile device, browse to ecowitt.net, and bookmark your dashboard for quick access.

b) Uploading Weather Data to Wunderground



1.

On the wunderground.com uploading page, enter the Station ID & Station Key, and press **Save**. Your station ID will be added on the WU StationID.

Press **Next**. Jump to the screen **Upload your weather data to weathercloud.net**.

If you do not have the Wunderground Station ID and Key, press **Register at Wunderground.com** to activating the Register with Wunderground option.

2.

Register at wunderground.com.

Enter a valid **e-mail address** and **password** to register and create your Wunderground account. You will be presented with a form to fill out.

3.

Complete and submit the form.

If you cannot find your weather station model number from the drop-down menu, please select **Others**.

Congratulations! Your personal weather station is now registered with Weather Underground.
Enter the information below to your weather station software.

Your PWS
Station ID:
Station Key:



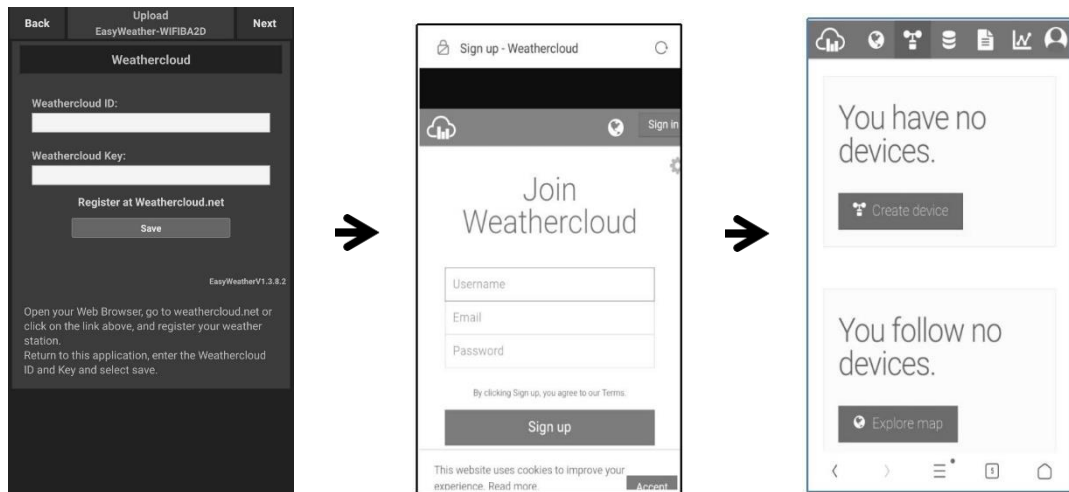
Configure Your Software

4.

Once successfully registered, you will receive a new Station ID and password/key and an e-mail about the information of Station ID and Station password/key.

Back to the wunderground.com uploading page, enter the Station ID & Station Key, press **Save**. Your station ID will be added on the WU StationID.

c) Uploading Weather Data to Weathercloud



1.

Upload your weather data to weathercloud.net.

Enter the Weathercloud ID & Weathercloud Key, press **Save**.

Press **Next**. Jump to the screen about Upload your weather data to Weather Observation Website (WOW).

If you do not have Weathercloud ID and Key, press **Register at Weathercloud.net** to open your web browser to activate the Register with Weathercloud.net option.

2.

Register at weathercloud.net.

Visit weathercloud.net and enter your user name, e-mail and password to sign up.

Respond to the validation e-mail from Weathercloud (it may take a few minutes).

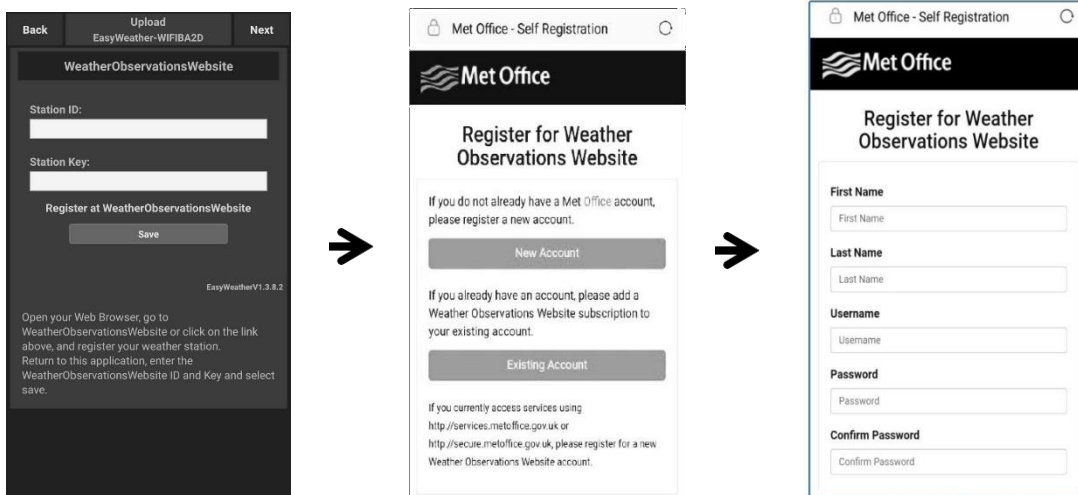
3.

You will then be prompted to add a device. Select "Create device" and enter your station's information.

After registering your station, take note of the "Weathercloud ID" and "Key" presented to you.

Enter these values in the mobile application.

d) Uploading Weather Data to Weather Observation Website (WOW)



1.

Upload your weather data to WOW.

Enter Weathercloud ID & Weathercloud Key, press **Save**.

Press **Finish**. Jump to the **Device List** home screen.

If you do not have WOW ID and Key, press **Register at WeatherObservationWebsite** to open your web browser to activate the Register with WOW option.

2.

Register at WeatherObservation website.

Choose to create a new account. You will be presented with a form to fill out.

3.

The actual form is longer, but all questions should be self-explanatory.

Complete and submit the form. You will shortly receive an e-mail with instructions on how to login.

Now, wait for the e-mail to arrive and click the link in that e-mail to confirm your e-mail address.

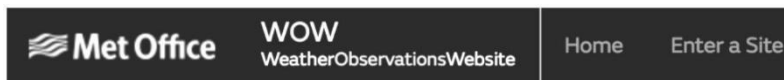
Follow the instructions on the screen and login to the site.

Once you are logged in you will need to create a new WOW site. "Sites" are the means by which WOW organizes weather data you contribute. Basically, WOW builds a personal web site for your weather station.

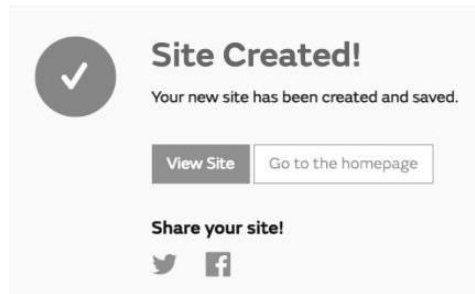
Associated with the web site is two items you will need to allow uploading of data:

- Site ID: This is an arbitrary number that is used to distinguish your site from another. This number appears (in brackets) next to or underneath the name of your site on the site information page, e.g. 6a571450-df53-e611-9401-0003ff5987fd.
- Authentication Key: This is a 6-digit number that is used to ensure data is coming from you and not another user.

Begin setting up a new site by clicking **Enter a Site**:



You will be presented with a form where you detail your station’s location and a bunch of other settings related to how you wish the site to operate. After you complete the setup, you should see:



Make sure you are (still) logged in to the WOW site. Login as necessary. Now click on **My Sites** in the navigation bar at the top. If you have only 1 site, you will now be shown its page. If you have multiple, you will have to choose the correct one first. On this page, you will find the site id just below the map:



You will also need to establish a unique 6-digit PIN code that you should keep secret. It is the “Authentication Key.” Set up this number by clicking on “Edit Site” and filling out the with a 6-digit number of your choice:

Authentication Key

123456

You will need both “Site ID” and “Authentication Key” to setup the upload configuration for WOW in the Weather Server.

In your mobile application, navigate to the “Device List” page and tap on the device you want to configure WOW for. You will then be shown the “wunderground.com” configuration. Please ignore and tap “Next” to see the “Weathercloud” configuration. Please press **Next** one more time and you will now be on the screen where you will configure WOW.

On this screen you will fill out “Station ID” with the WOW “Site ID” value, and “Station Key” with the WOW “Authentication Key” you created.

Press **Save** to finalize the configuration.

e) Uploading Weather Data to a Customized Website

If you want to upload data to your customized website, press the **Enable** button (displayed blue) and select the protocol type. The website should have the same protocol with Wunderground or Ecowitt. Input all the information needed. Press **Save**.

iOS User

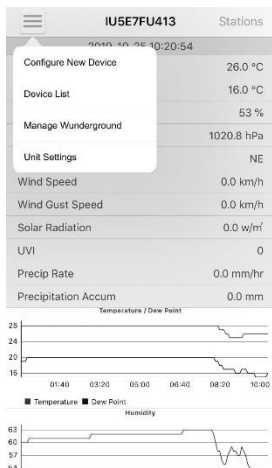
Activate the application you have downloaded on your mobile device. The main screen will indicate your station is off-line (because it is not yet connected to Wi-Fi).

Parameter	Value
No Station ID	
Temperature	--
Dew Point	--
Relative Humidity	--
Relative Pressure	--
Wind Direction	--
Wind Speed	--
Wind Gust Speed	--
Solar Radiation	--
Rainfall Rate	--
Rainfall Today	--

Configure the Device

REMARK

If you own a dual-band router (2.4 GHz and 5.0 GHz), make sure you connect to the 2.4 GHz band, otherwise it will fail to connect the weather station to Wi-Fi.



1.

Tap on the settings icon and select "Configure a New Device".



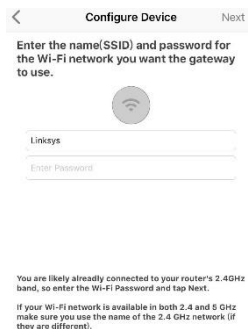
2.

Select the device you have from the device list, then press **Next**.



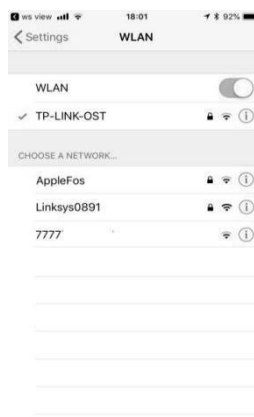
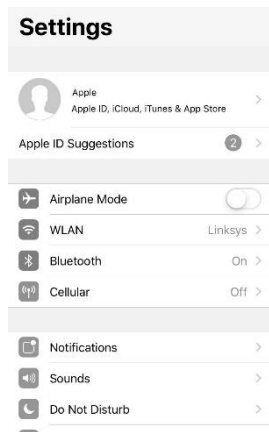
3.

Operate as per the information, tick the box to confirm **Completed Operation**, then press **Next**.

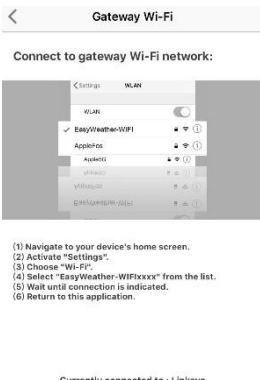


4.

Press **Syncn** and select your Wi-Fi network from the WLAN list. Then, enter your Wi-Fi **password** and press **Next**.

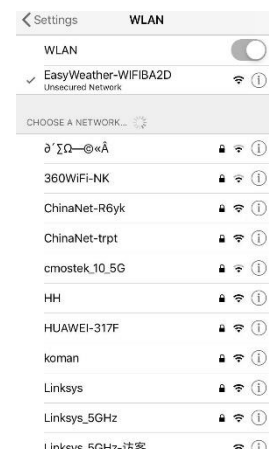


Select your Wi-Fi network you want and return to WS View App.



5.

Press **Select Wi-Fi** to go to the Wi-Fi setting.



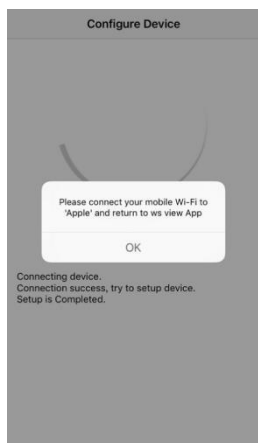
6.

Select the Wi-Fi device "EasyWeather-WIFxxxxI" and return to the WS View App.



7.

Connection success. It will jump to the **Upload Setting** screen automatically.



8.

It might not return to the same Wi-Fi network which you selected on step 4. The window "Please connect your mobile Wi-Fi to xxxx(WiFi Network name) and return to WS View App" will pop up. Press **OK** to continue.

Upload Setting

Your console can send your sensor data to select internet-based weather services: ecowitt.net, Wunderground.com, weathercloud.net, wow.metoffice.gov.uk and Customized Website. The user needs to register at the selected website to get the station ID and password.

a) Uploading Weather Data to Ecowitt



1.

On the **ecowitt.net** uploading page, enable the ON button (displayed blue) and set the uploading interval time.

Press **Save** on the page. Copy the MAC address (will be used to add the device on the server later).

Press **Register at Ecowitt.net** to open the web browser and to activate option.

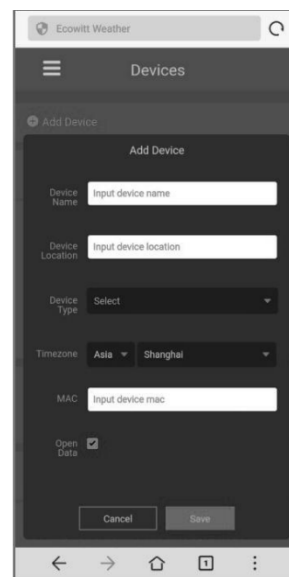
After adding the device and uploading data successfully, if you found the data not reporting to server, press **Response Time** to reset and check the response status.



2.

Finish the registration on the Ecowitt page.

If you have an account and password, press **Return to Login** to login to the website.

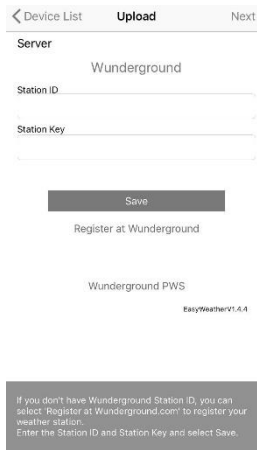


3.

Press the upper left menu button and select Devices. Press **Add Device** and enter all the information needed. Press **Save**.

If you tick **Open data**, your weather data can be viewed by other people.

b) Uploading Weather Data to Wunderground

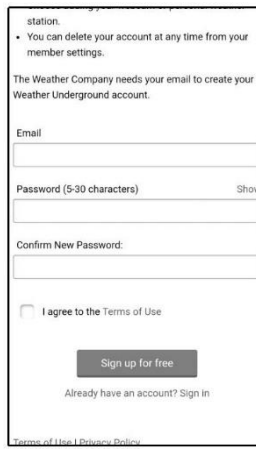


1.

On the wunderground.com uploading page, enter the Station ID & Station Key, and press **Save**. Your station ID will be added on the WU StationID.

Press **Next**. Jump to the screen **Upload your weather data to weathercloud.net**.

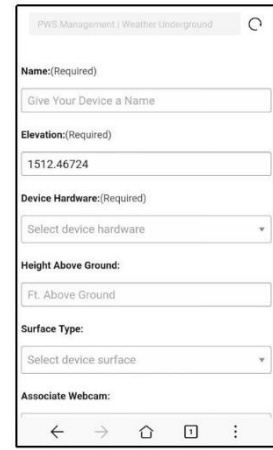
If you do not have the Wunderground Station ID and Key, press **Register at Wunderground.com** to activating the Register with Wunderground option.



2.

Register at wunderground.com.

Enter a valid **e-mail address** and **password** to register and create your Wunderground account. You will be presented with a form to fill out.



3.

Complete and submit the form.

If you cannot find your weather station model number from the drop-down menu, please select **Others**.

Congratulations! Your personal weather station is now registered with Weather Underground.

Enter the information below to your weather station software.

Your PWS
Station ID: **WU011210**
Station Key: **151246724**

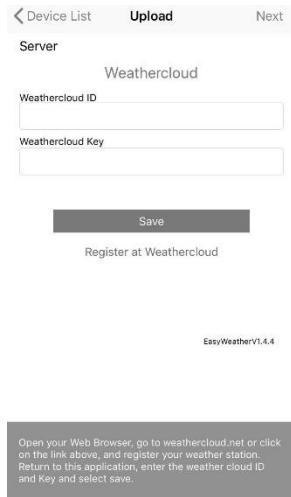


4.

Once successfully registered, you will receive a new Station ID and password/key and an e-mail about the information of Station ID and Station password/key.

Back to the wunderground.com uploading page, enter the Station ID & Station Key, press **Save**. Your station ID will be added on the WU StationID.

c) Uploading Weather Data to Weathercloud



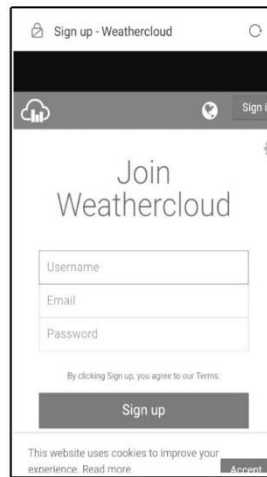
1.

Upload your weather data to weathercloud.net.

Enter the Weathercloud ID & Weathercloud Key, press **Save**.

Press **Next**. Jump to the screen about Upload your weather data to Weather Observation Website (WOW).

If you do not have Weathercloud ID and Key, press **Register at Weathercloud.net** to open your web browser to activate the Register with Weathercloud.net option.

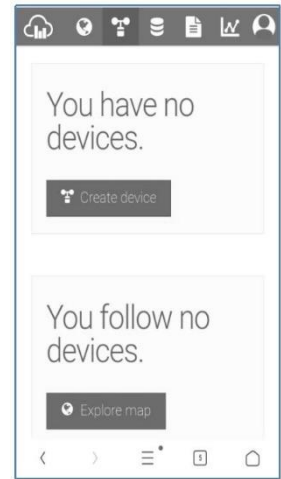


2.

Register at weathercloud.net.

Visit weathercloud.net and enter your user name, e-mail and password to sign up.

Respond to the validation e-mail from Weathercloud (it may take a few minutes).



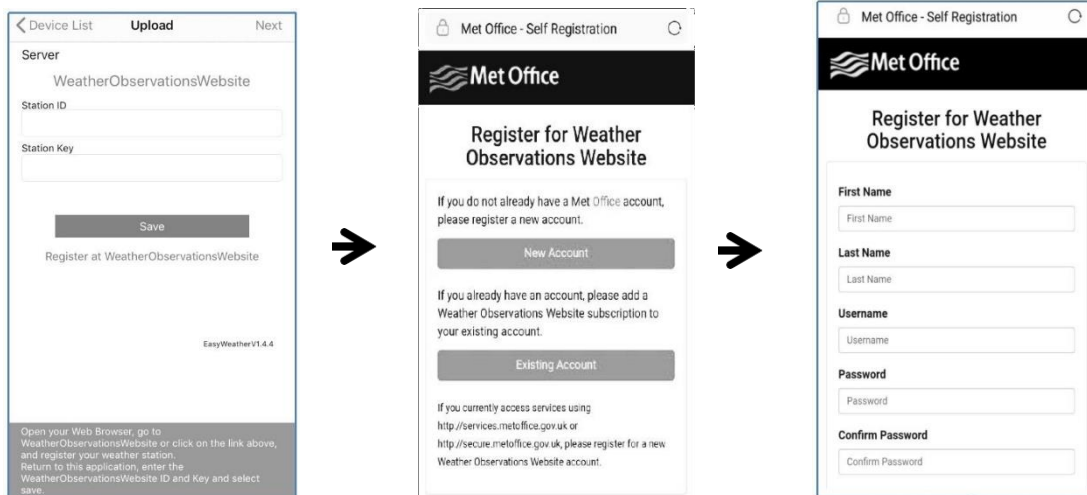
3.

You will then be prompted to add a device. Select "Create device" and enter your station's information.

After registering your station, take note of the "Weathercloud ID" and "Key" presented to you.

Enter these values in the mobile application.

d) Uploading Weather Data to Weather Observation Website (WOW)



1.

Upload your weather data to WOW.

Enter Weathercloud ID & Weathercloud Key, press **Save**.

Press **Finish**. Jump to the **Device List** home screen.

If you do not have WOW ID and Key, press **Register at WeatherObservationWebsite** to open your web browser to activate the Register with WOW option.

2.

Register at WeatherObservation website.

Choose to create a new account. You will be presented with a form to fill out.

3.

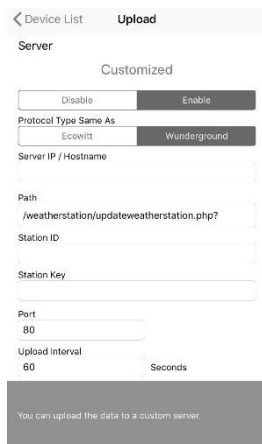
The actual form is longer, but all questions should be self-explanatory.

Complete and submit the form. You will shortly receive an e-mail with instructions on how to login.

Now, wait for the e-mail to arrive and click the link in that e-mail to confirm your e-mail address.

Follow the instructions on the screen and login to the site.

e) Uploading Weather Data to a Customized Website



If you want to upload data to your customized website, press the **Enable** button (displayed blue) and select the protocol type. The website should have the same protocol with Wunderground or Ecowitt. Input all the information needed. Press **Save**.

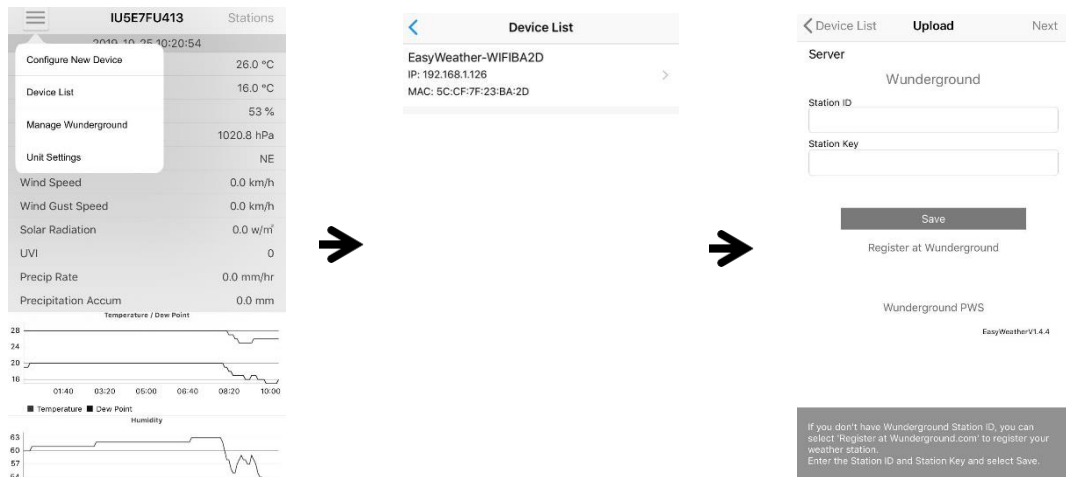
2. Mobile Application – Device List

You will see your console through the **Device List** menu option.

Tapping on your console's entry in the device list will bring you to the page where you can change WU registration information. If you want to stop your console upload data to Wunderground, delete your Station ID and select **Save**.



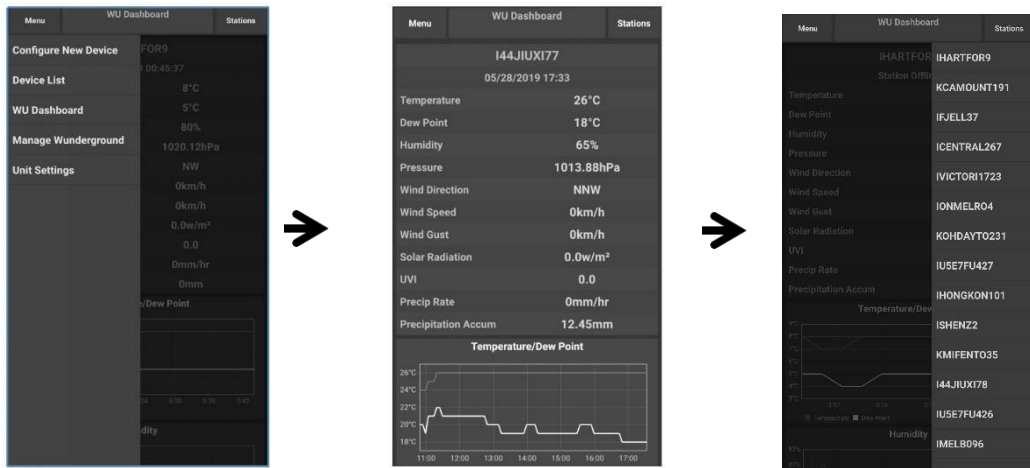
Mobile application – Device List (Android)



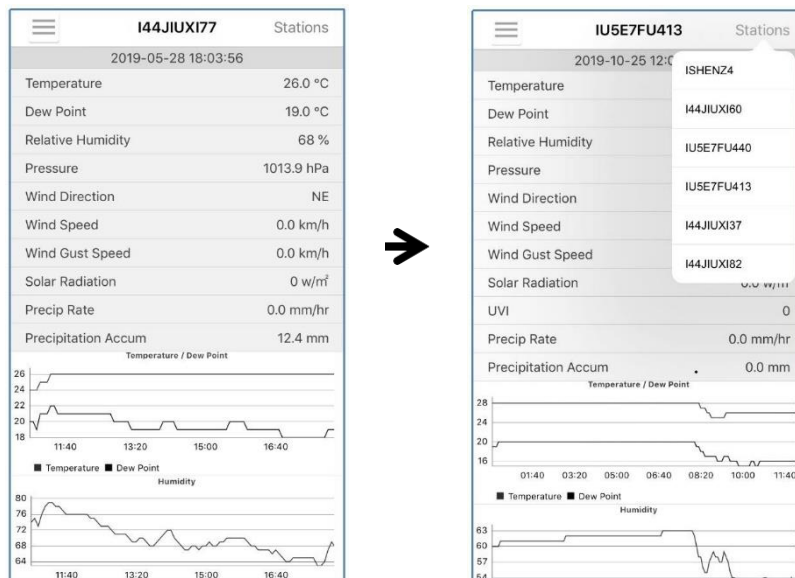
Mobile application – Device List (iOS)

3. Mobile Application – Check WU Weather Data and Graph

In the mobile application tap **Menu** and select **WU Dashboard**. You will be presented with a page listing current conditions for that station. If you have added multiple WU IDs, tap on the WU Station ID to switch to view data from other IDs.



Mobile application – WU Dashboard (Android)

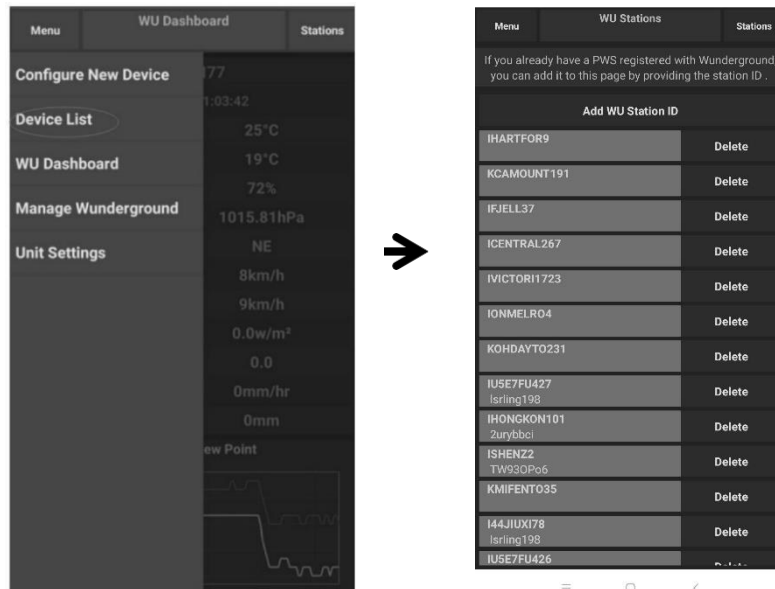


Mobile application – WU Dashboard (iOS)

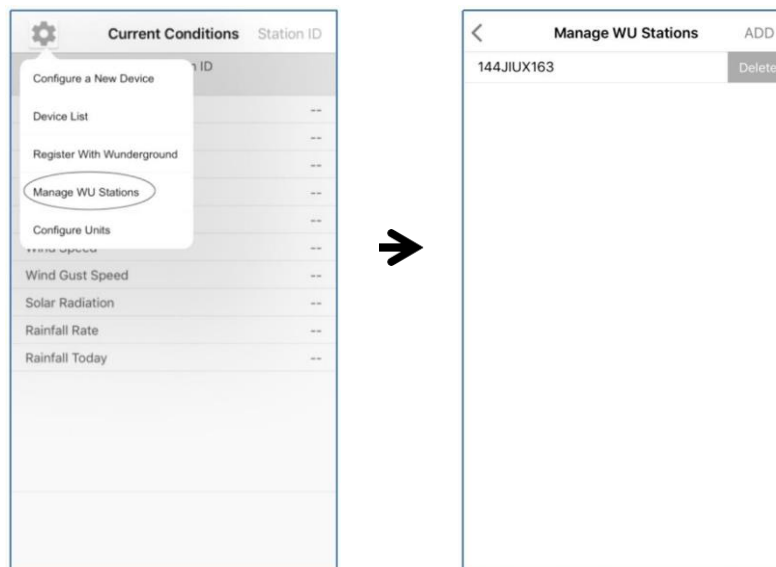
4. Mobile Application – Remove/Add WU ID

If you have previously registered your console for use with wunderground.com and wish to remove this device data display from App, use the **Manage WU Station** menu option after tapping on the settings icon, select **Delete** to delete your console from the list and confirm you wish to delete the station. The Station ID will delete from WU Station ID list and will not have the data information on the APP. The data will upload to wunderground.com as usual.

If you want to add a new weather station to view its data on APP, and this device is registered in Wunderground.com, select **Add WU Station ID** and input the WU station ID of this new device.



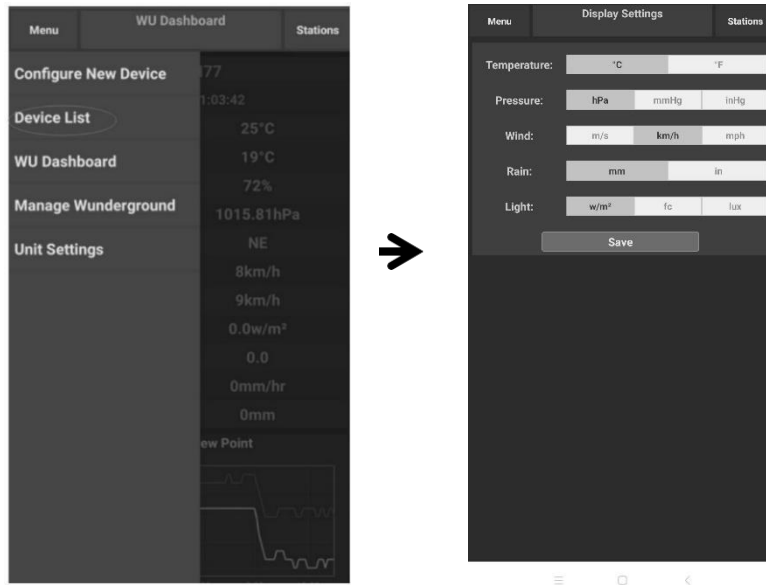
Mobile application – WU Dashboard (Android)



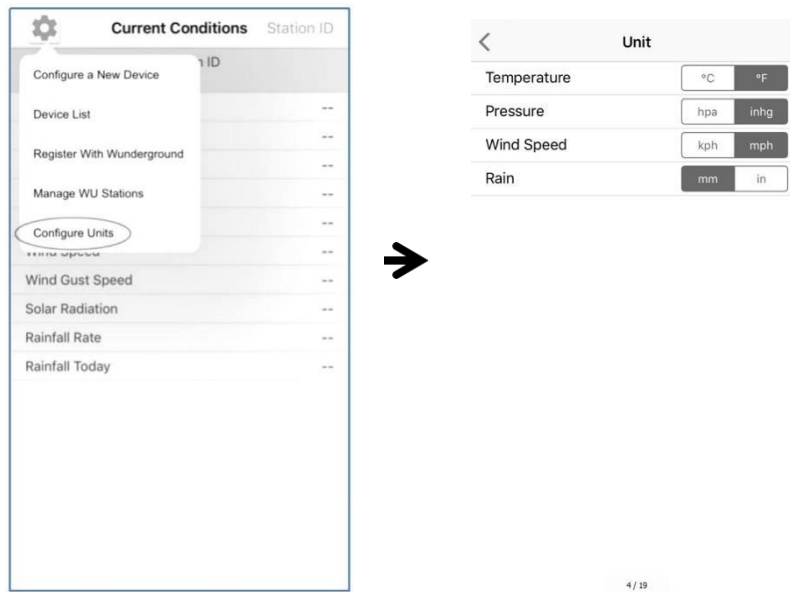
Mobile application – WU Dashboard (iOS)

5. Mobile Application – Set Units

You may want to change the units in which sensor values are reported. To do so, click on the **Configure Units** menu after tapping on the settings icon. Next, tap on the sensor type you wish to change the reporting units for and set the units as desired.



Mobile application – Configure Units (Android)

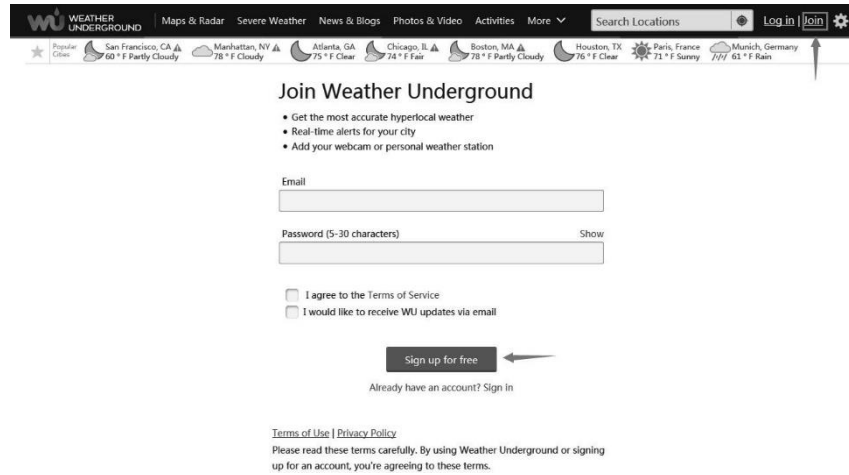


Mobile application – Configure Units (iOS)

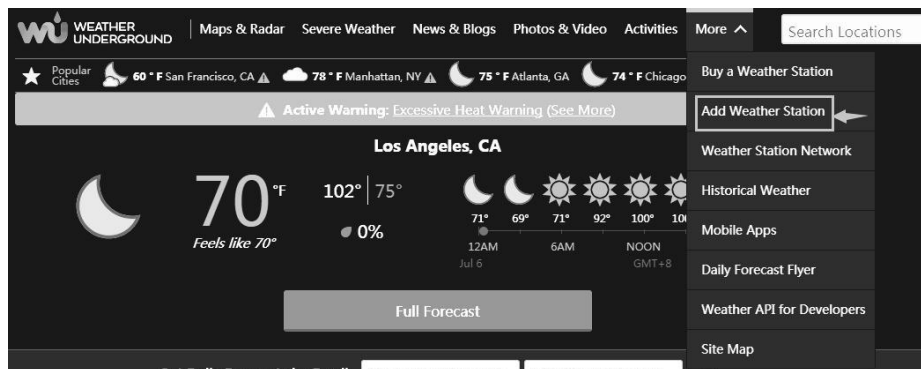
6. Register Wunderground Through PC or MAC

If you have not already done setup for wunderground.com during the Wi-Fi setup, you can do so later. Perform the following steps:

1. Visit wunderground.com and click **Join** as the right top arrow indicates. Select the **Sign up for free** option.



2. Click **More** and select **Add Weather Station** to register your station.



Personal Weather Station Network

Overview Buying Guide **Register with WU**

Step 1: Register Your Station

1. Type in the **city, state, country** where your weather station will be located.
2. Drag the **red marker** to your specific location.



- Click **Verify Location** and fill out the form. After submitting the form, you will see the following:

Step 3: Add Your WU Info to Your Weather Station Software

Congratulations. Your station is now registered with Wunderground!

You are almost done. Now go to your weather station software and add the following:

Your Station ID:
KCALOSAN764

Your Station Key/Password:
v8cp612c

[My Weather Stations](#)

It may take a few minutes or several hours for your station to start sending data to Weather Underground.
ID and Password are case-sensitive. Process may require you to register with a 3rd party site (eg. *rainwise.net*).

Not seeing your station data yet? Check out our PWS Help Center.

REMARK

Your station ID will have the form: KSSCCCC###, where K is for USA station (I for international), SS is your state, CCCC is your city and ### is the station number in that city.

In the example above, KCALOSAN764 is in the USA (K), state of California (CA), city of Los Angeles (LOSAN) and #764.

7. Viewing Data on Wunderground

You can also observe your weather station's data by using the wunderground.com web site. You will use a URL like this one, where your station ID replaces the text "STATIONID":
<http://www.wunderground.com/personal-weather-station/dashboard?ID=STATIONID>.

It will show a page such as this, where you can look at today's data and historical data as well:

Forecast for Darwin, AU > -12.460 130.841 > 66 ft

Current Conditions Station reported 0 second ago

78.4 °F
Feels Like **78.4 °F**

12.1 mph Wind from ENE
Gusts: 12.5 mph

Dew Point:	66.2 °F	UV:	0.0
Humidity:	66%	Solar:	0 w/m ²
Precip Rate:	0.00 in/hr	Soil Moisture:	--
Precip Accum:	0.00 in	Soil Temp:	--
Pressure:	29.80 in	Leaf Wetness:	--

7:08 AM ☀ 6:33 PM
☾ Waning Gibbous | 50% Illuminated

Weather History for Darwin, [IDARWIN13]

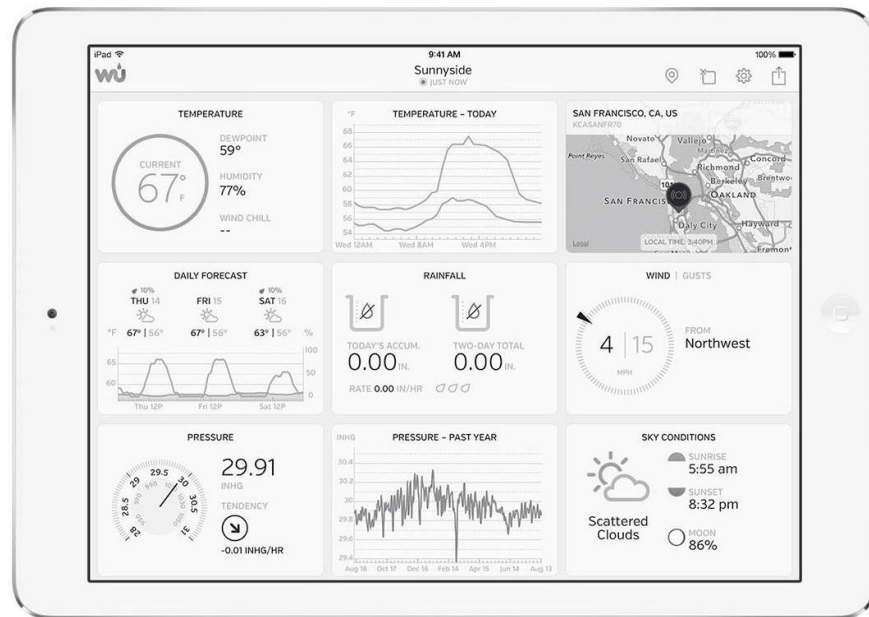
Summary July 6, 2018

	High	Low	Average	High	Low	Average
Temperature	82.4 °F	77.4 °F	79.9 °F	13 mph	--	12 mph
Dew Point	73.8 °F	64.6 °F	70.1 °F	Wind Gust	14 mph	--
Humidity	79%	63%	70%	Wind Direction	--	West
Precipitation	0 in	--	--	Pressure	29.67 in	29.59 in

There are also some very useful mobile apps. The URLs provided here go to the web version of the application pages. You can also find them directly from the iOS or Google Play stores:

- **WunderStation:** iPad application for viewing your station's data and graphs.

<https://itunes.apple.com/us/app/wunderstation-weather-from-your-neighborhood/id906099986>



- **WU Storm:** iPad and iPhone application for viewing radar images, animated wind, cloud coverage and detailed forecast, and PWS station data.

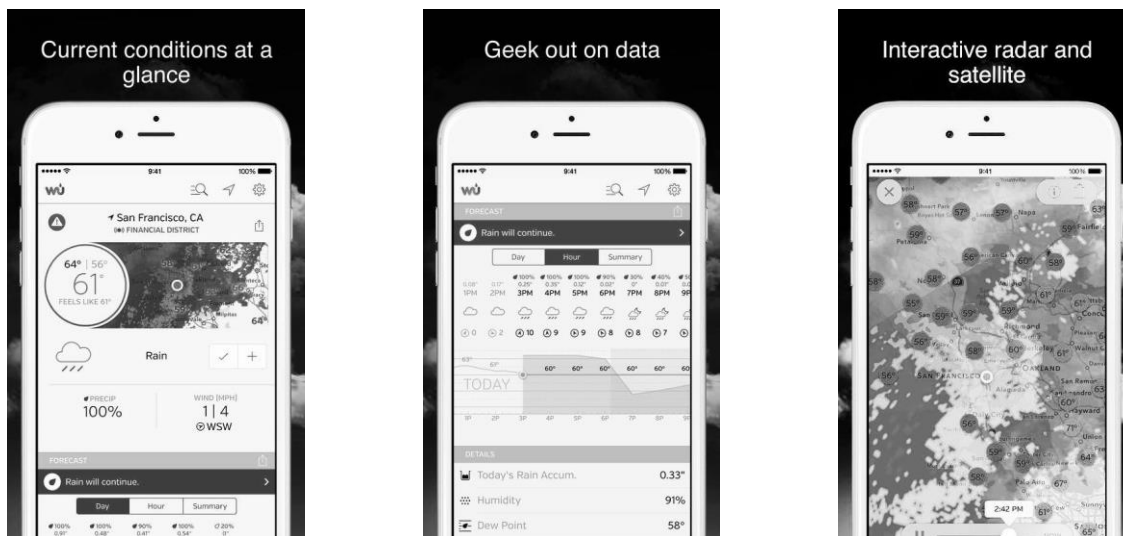
<https://itunes.apple.com/us/app/wu-storm/id955957721>



- **Weather Underground:** Forecast: iOS and Android application for forecasts.

<https://itunes.apple.com/us/app/weather-underground-forecast/id486154808>

<https://play.google.com/store/apps/details?id=com.wunderground.android.weather&hl=en>



- **PWS Weather Station Monitor:** View weather conditions in your neighbourhood, or even right in your own backyard. Connects to wunderground.com.

<https://itunes.apple.com/us/app/pws-weather-station-monitor/id713705929>



Use this device with original accessories only. Velleman nv cannot be held responsible in the event of damage or injury resulting from (incorrect) use of this device. For more info concerning this product and the latest version of this manual, please visit our website www.velleman.eu. The information in this manual is subject to change without prior notice.

© COPYRIGHT NOTICE
The copyright to this manual is owned by Velleman nv. All worldwide rights reserved.
 No part of this manual may be copied, reproduced, translated or reduced to any electronic medium or otherwise without the prior written consent of the copyright holder.