

# Proximity Card Reader with USB Interface

Driver installation • De driver installeren • Installer le piloté • Den Treiber installieren • Instalar el driver



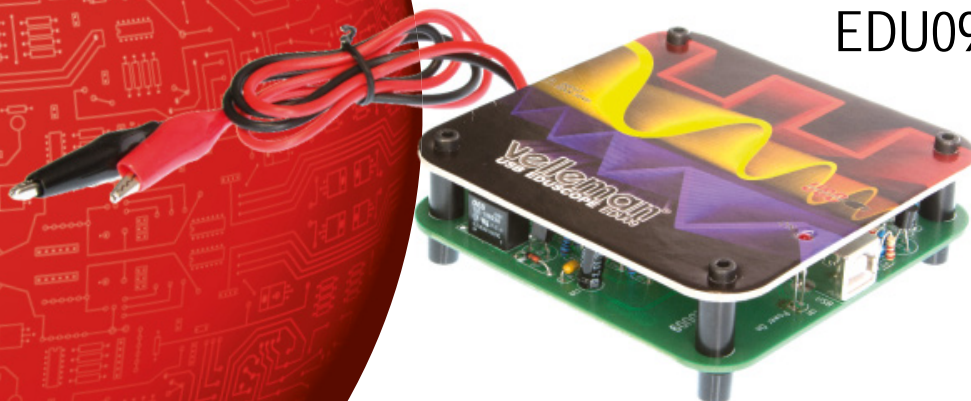
velleman®  
projects

NEW

# EDUCATIONAL OSCILLOSCOPE KIT FOR PC

EDU09

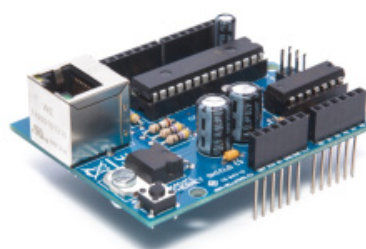
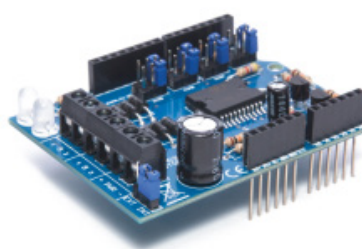
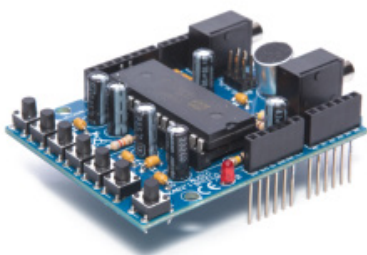
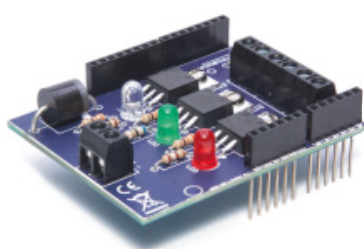
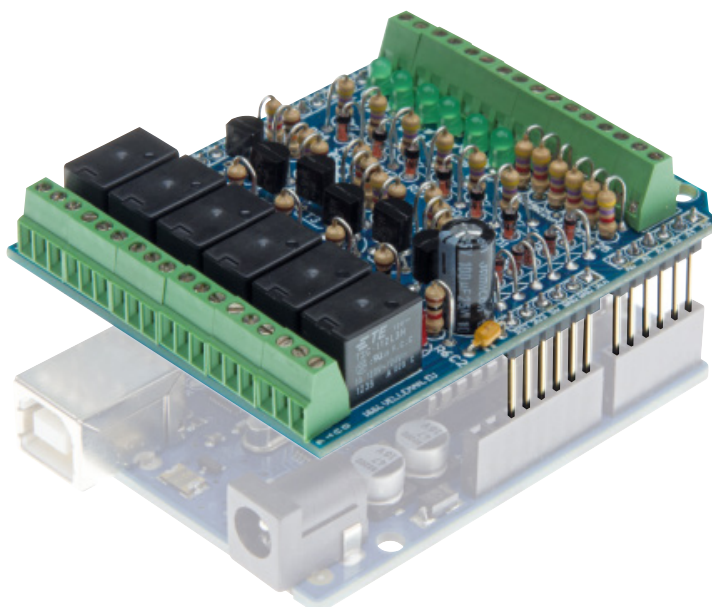
velleman®  
projects



Oscilloscopes are expensive and complicated instruments? Not this one! Build your own oscilloscope and use your PC to display your measurements.



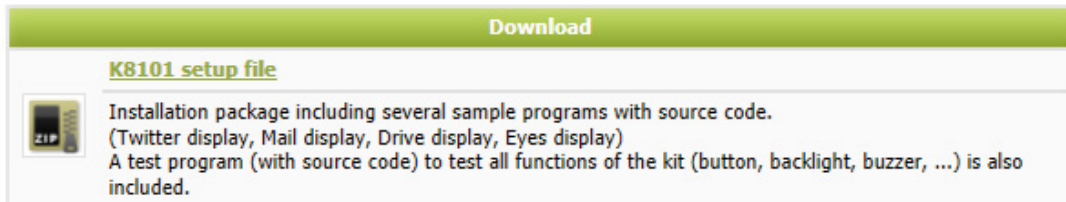
## NEW ARDUINO SHIELDS



# INSTALLING THE DRIVER

Download the “**K8019\_setup**” file here:

[http://www.velleman.eu/downloads/files/downloads/K8019\\_setup.zip](http://www.velleman.eu/downloads/files/downloads/K8019_setup.zip)

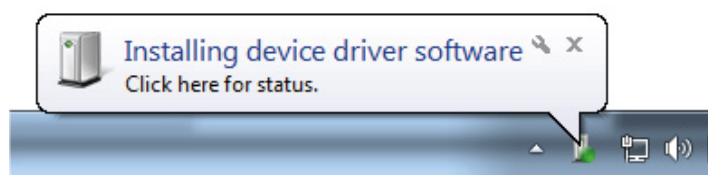


Unpack the download and install the software. The driver for the K8019 is copied into the default installation folder.

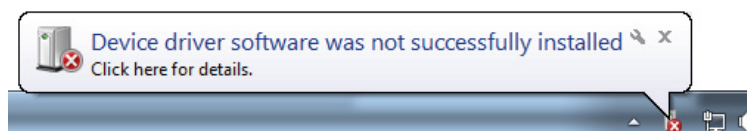
In a 32-bit version of Windows this is: **C:\Program Files\Velleman\K8019\K8019 Driver.**

In a 64-bit version of Windows this is **C:\Program Files (x86)\Velleman\K8019\K8019 Driver.**

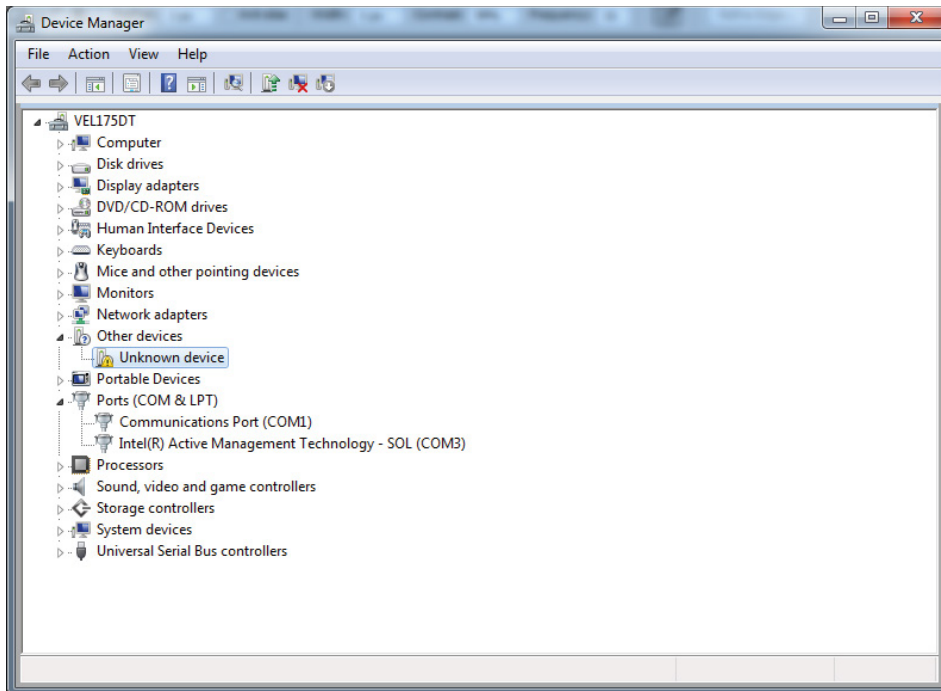
After the installation connect the K8019 via a USB cable with the computer, in the bottom right corner the following appears:



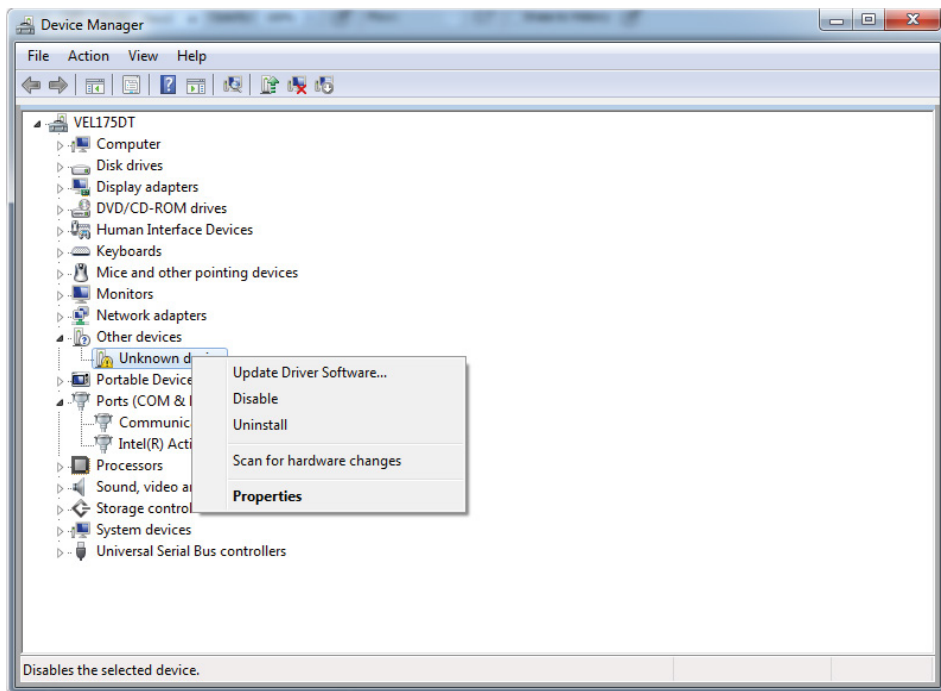
Wait for the computer to try and install the driver. This will fail and the following should appear (It can take a while before you see this balloon because windows is checking the internet for a driver):



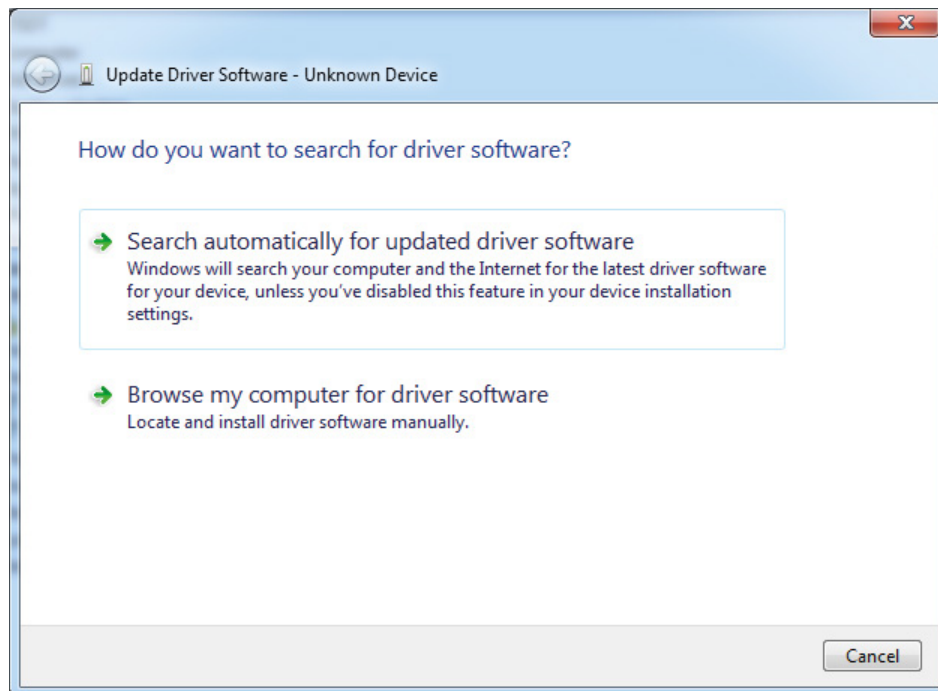
Now go to the **Device Manager** of your computer (press the start button and search for “Device Manager”).



Now right-click on K8019, and choose **Update Driver Software**.



The following should appear, choose **Browse my computer for driver software**.



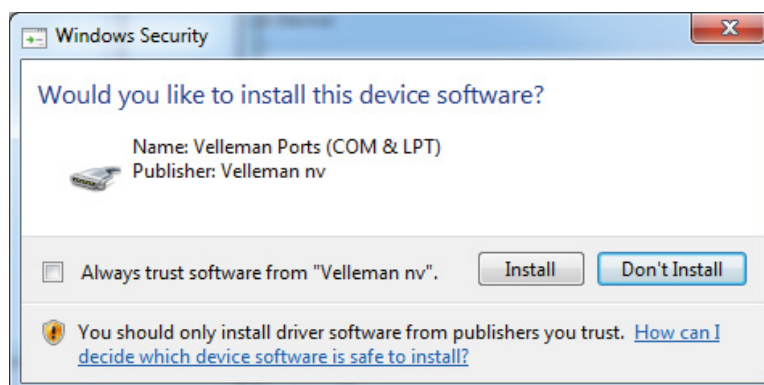
Browse for the following path on a 32-bit version of Windows:

**C:\Program Files\Velleman\K8019\K8019 Driver**

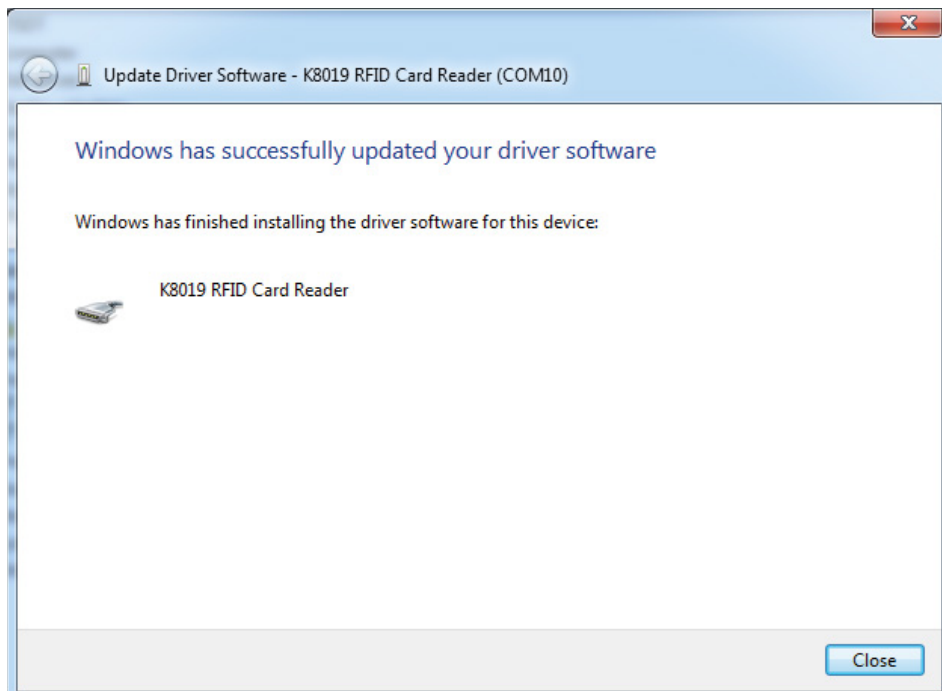
Browse for the following path on a 64-bit version of Windows:

**C:\Program Files (x86)\Velleman\K8019\K8019 Driver**

Click OK, when the following window appears click **Install this driver software anyway**



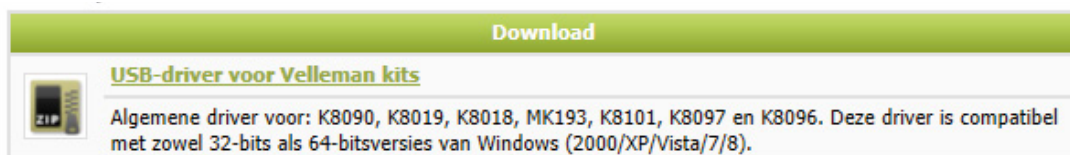
Windows will install the driver and you will be ready to use the K8019 with the software!



# DE DRIVER INSTALLEREN

Download hier de “**K8019\_setup**” softwarepakket:

<http://www.velleman.eu/downloads/files/downloads/vlktcdc.zip>

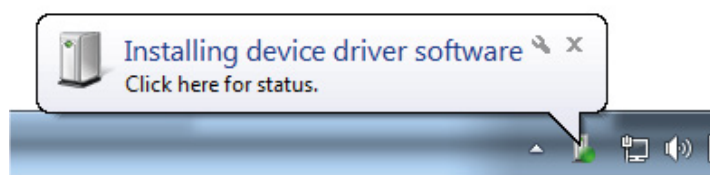


Pak het pakket uit en installeer de software. De driver voor de K8019 wordt naar de standaard installatiemap gekopieerd.

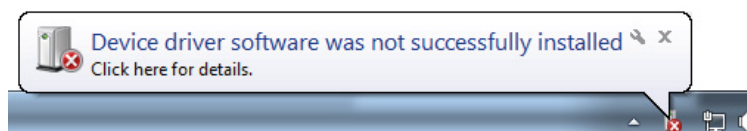
In een 32-bit versie van Windows is dit **C:\Program Files\Velleman\K8019\K8019 Driver**.

In een 64-bit versie van Windows is dit **C:\Program Files (x86)\Velleman\K8019\K8019 Driver**.

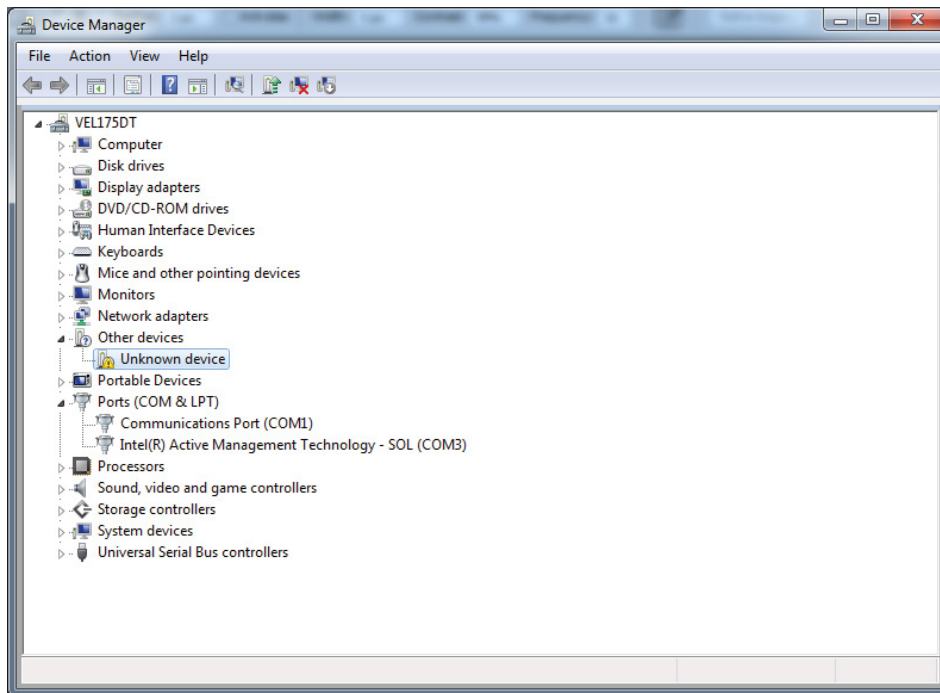
Na de installatie, sluit de K8019 via een USB-kabel op de computer aan. Rechts onderaan het scherm verschijnt:



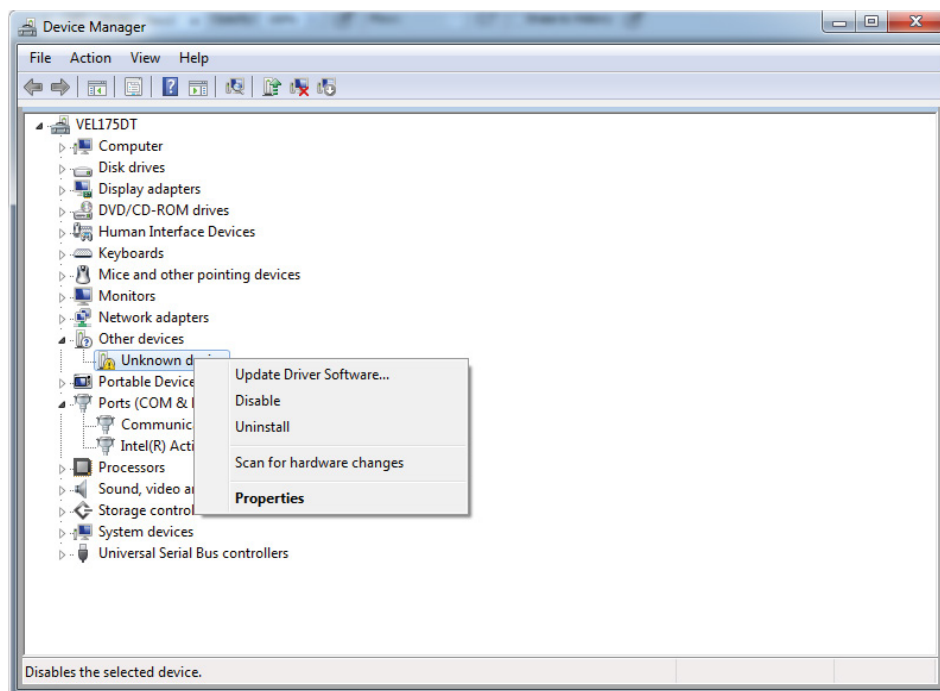
Wacht even terwijl de computer probeert om de driver te installeren. De installatie mislukt en de volgende foutmelding zou moeten verschijnen (Het kan even duren vooraleer dit bericht verschijnt omdat Windows aan het zoeken is naar een driver op het internet):



Ga naar het **Apparaatbeheer** (*Device Manager*) van uw computer (druk op de startknop en zoek naar “Apparaatbeheer”).

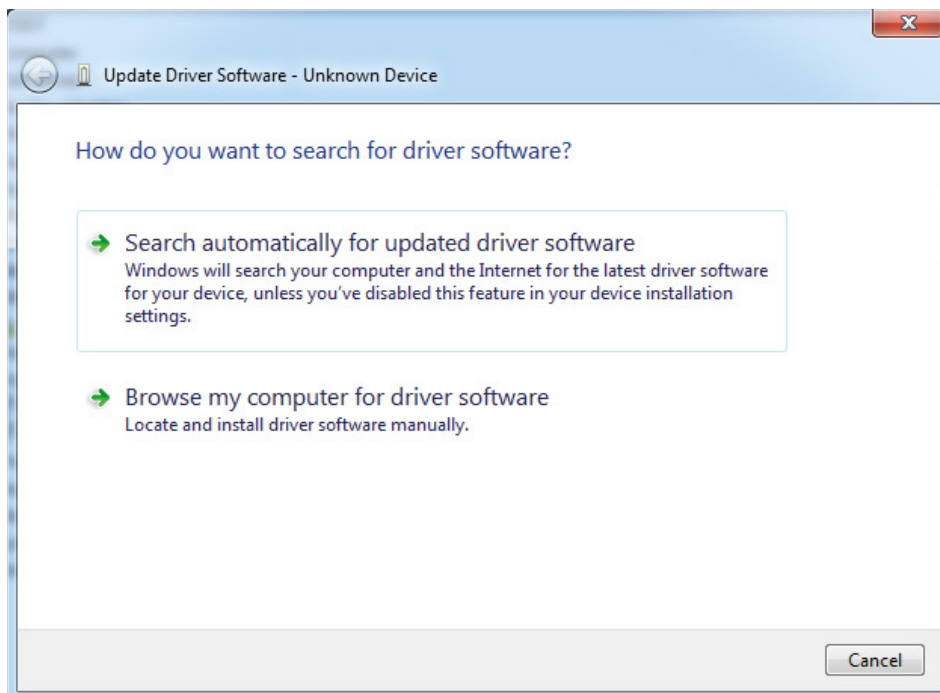


Druk met de rechtermuisknop op K8019, en selecteer **Stuurprogramma bijwerken** (*Update Driver Software*).





Het volgende venster zou moeten verschijnen, selecteer **Op mijn computer naar stuurprogramma's zoeken** (*Browse my computer for driver software*).



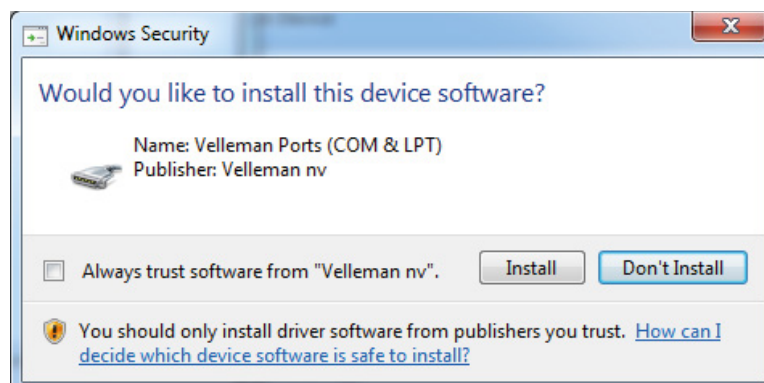
Zoek naar het volgende pad op een 32-bit versie van Windows:

**C:\Program Files\Velleman\K8019\K8019 Driver**

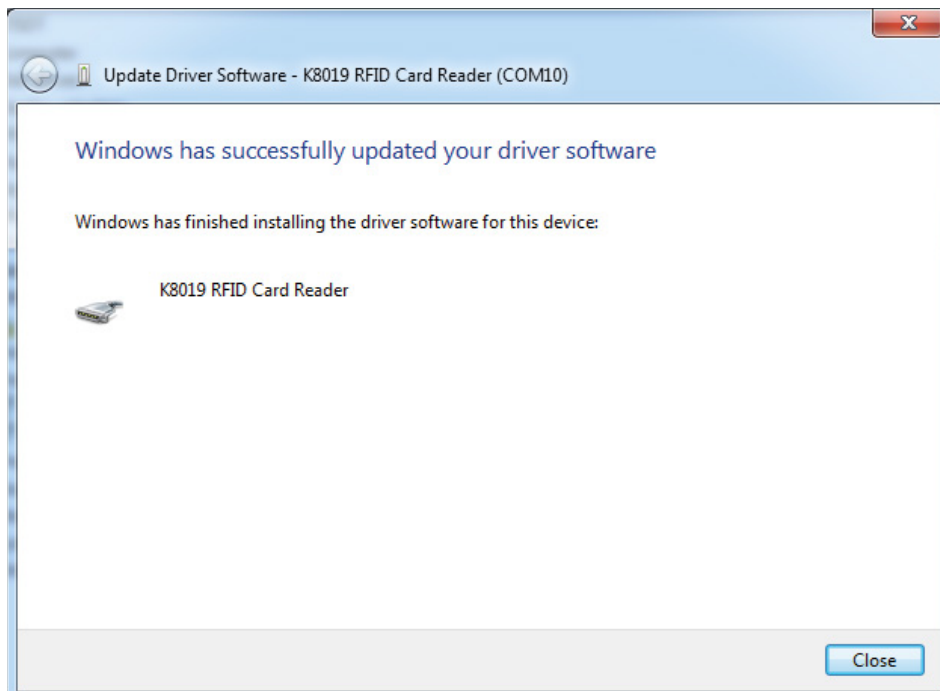
Zoek naar het volgende pad op een 64-bit versie van Windows:

**C:\Program Files (x86)\Velleman\K8019\K8019 Driver**

Klik op OK. Wanneer het volgende venster verschijnt, klik op **“Dit stuurprogramma toch installeren”** (*Install this driver software anyway*).



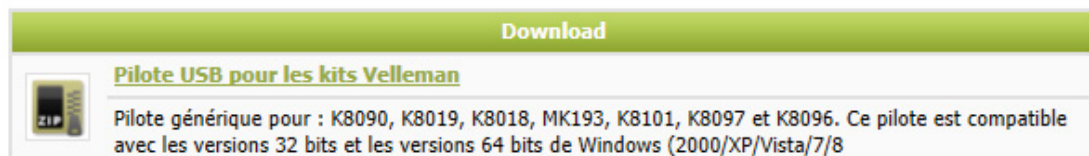
Windows installeert de driver en de K8019 is klaar om te gebruiken met de software!



# INSTALLER LE PILOTE

Téléchargez ici le logiciel "K8019\_setup":

[http://www.velleman.eu/downloads/files/downloads/K8019\\_setup.zip](http://www.velleman.eu/downloads/files/downloads/K8019_setup.zip)

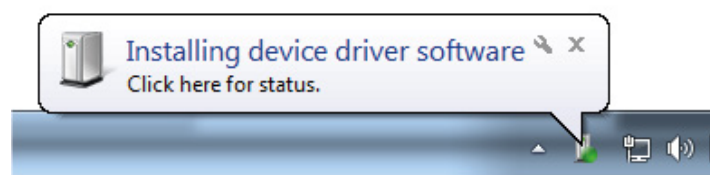


Décompressez le téléchargement et installez le logiciel. Le pilote pour le K8019 est copié dans le répertoire d'installation par défaut.

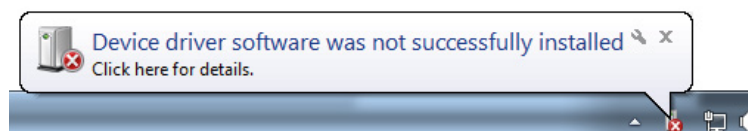
Pour la version 32 bits de Windows: **C:\Program Files\Velleman\K8019\K8019 Driver.**

Pour la version 64 de Windows: **C:\Program Files (x86)\Velleman\K8019\K8019 Driver.**

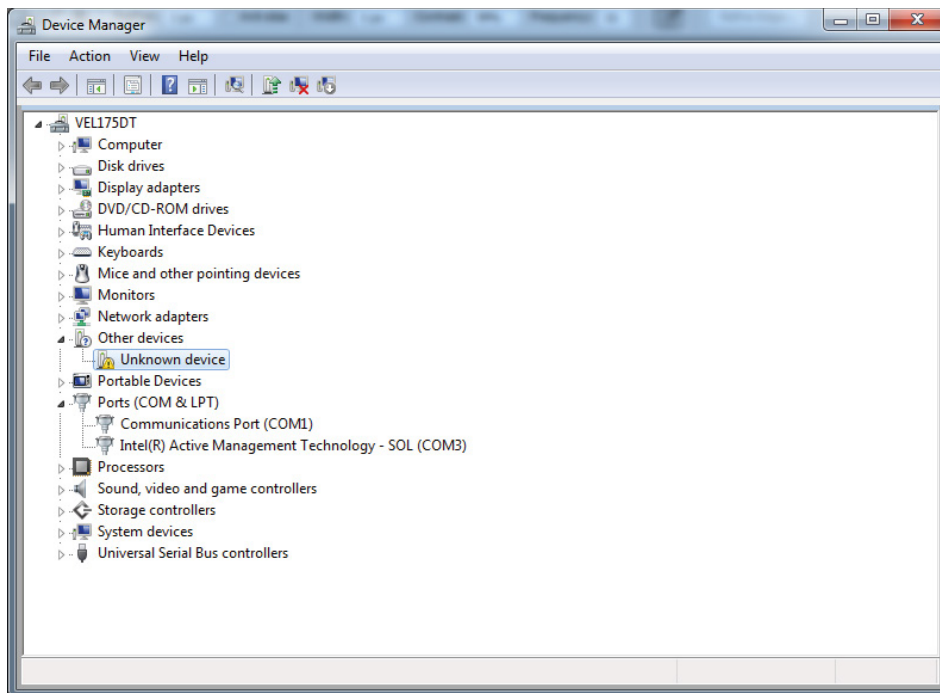
Après l'installation, connectez le K8019 à l'ordinateur avec un câble USB. En bas à droite de l'écran, la fenêtre suivante apparaît:



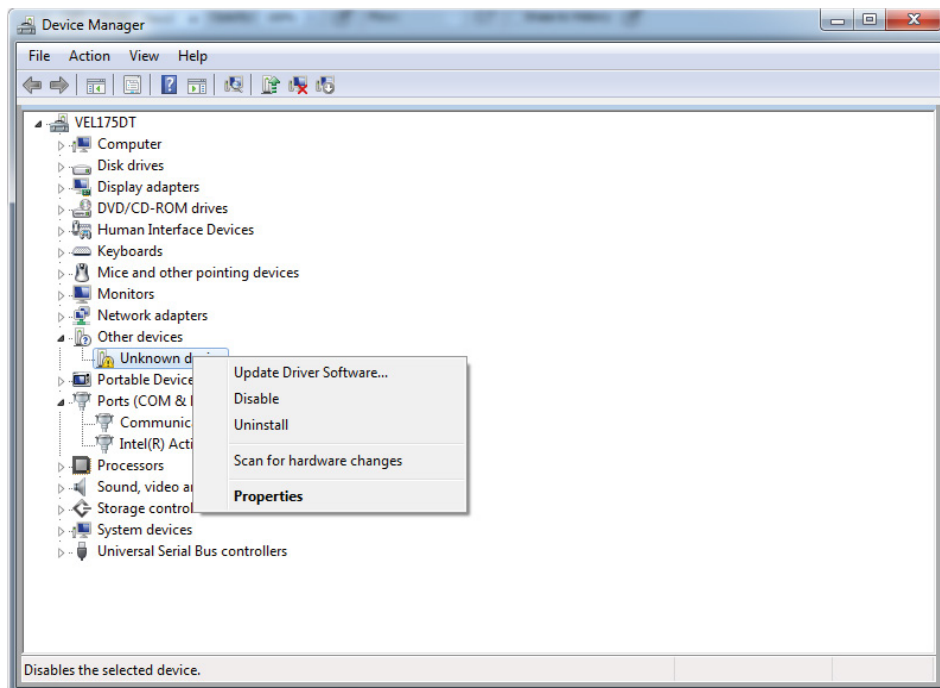
Patiencez pendant que l'ordinateur essaie d'installer le pilote. L'installation ne se lance pas et le message suivant devrait apparaître (Cela peut durer quelques instants avant de voir le message parce que Windows est en train de rechercher un pilote sur l'Internet):



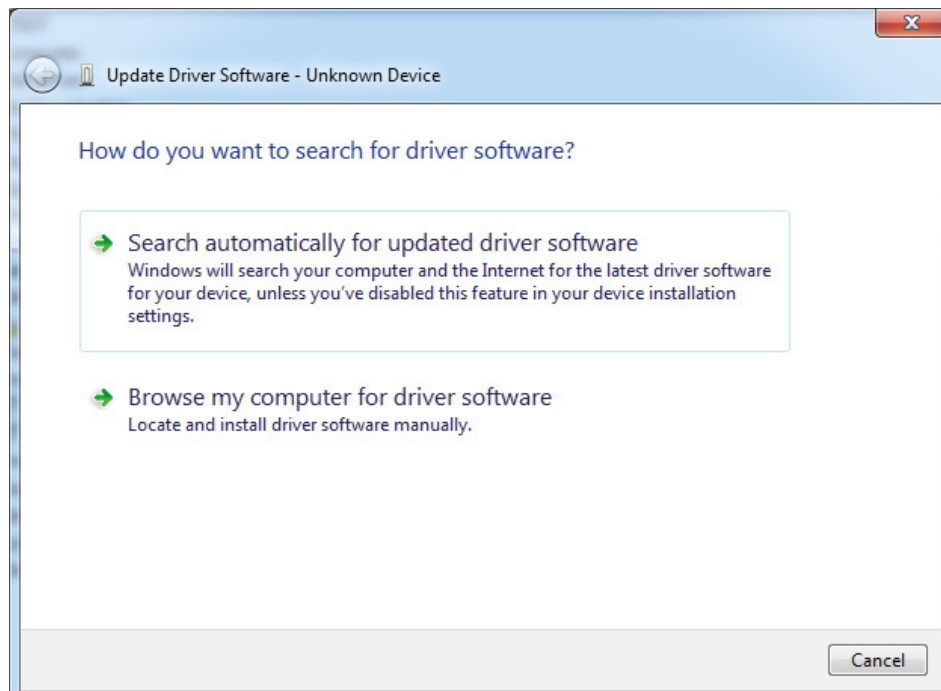
Accédez au **Gestionnaire de périphériques** (*Device Manager*) de votre ordinateur (appuyez sur le bouton de démarrage et recherchez “Gestionnaire de périphériques”).



Cliquez avec le bouton droit de votre souris sur K8019, et sélectionnez **Mettre à jour le pilote logiciel** (*Update Driver Software*).



La fenêtre suivante devrait apparaître, sélectionnez **Rechercher un pilote logiciel sur mon ordinateur** (Browse my computer for driver software).



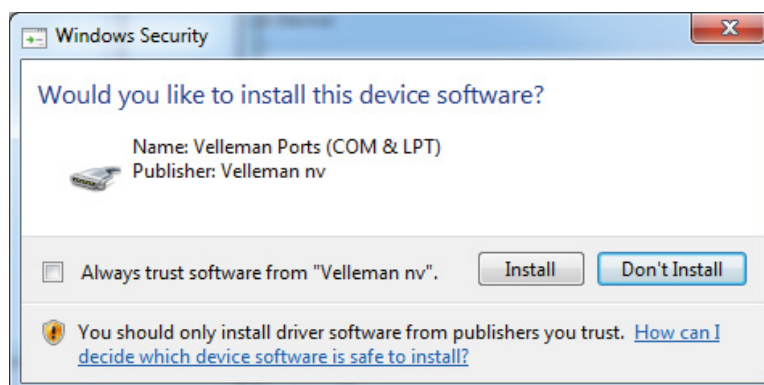
Parcourez le chemin suivant sur une version 32 bits de Windows:

**C:\Program Files\Velleman\K8019\K8019 Driver**

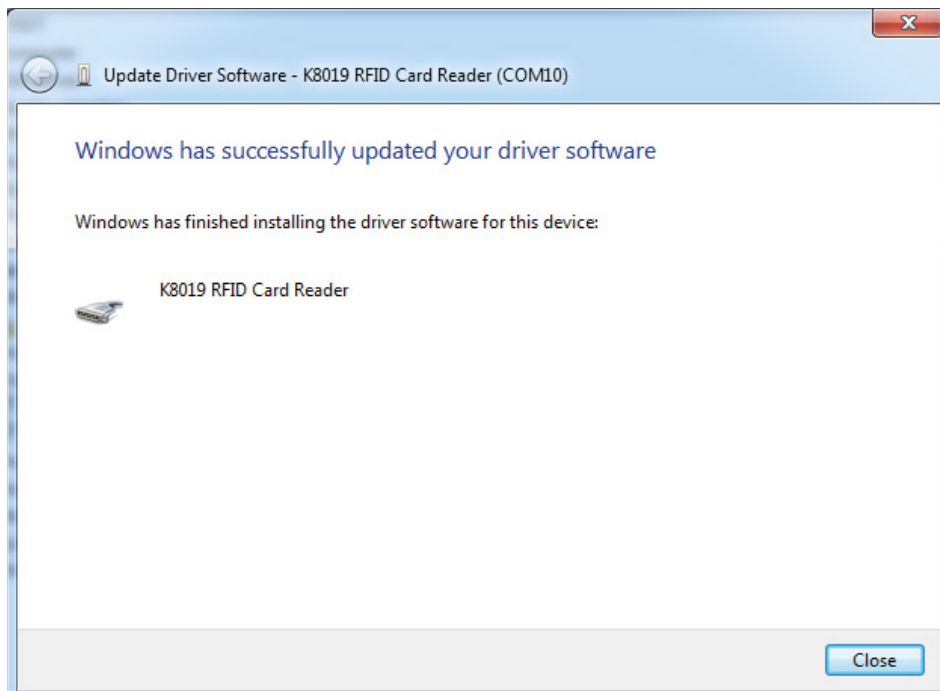
Parcourez le chemin suivant sur une version 64 bits de Windows:

**C:\Program Files (x86)\Velleman\K8019\K8019 Driver**

Cliquez sur OK. Lorsque la fenêtre suivante s'affiche, cliquez sur **"Installer ce pilote logiciel quand même"** (*Install this driver software anyway*).



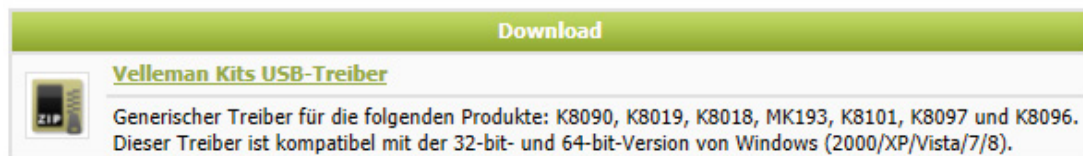
Windows installe le pilote et le K8019 est prêt à l'usage avec le logiciel!



# DEN TREIBER INSTALLIEREN

Laden Sie "K8019\_setup" herunter:

[http://www.velleman.eu/downloads/files/downloads/K8019\\_setup.zip](http://www.velleman.eu/downloads/files/downloads/K8019_setup.zip)

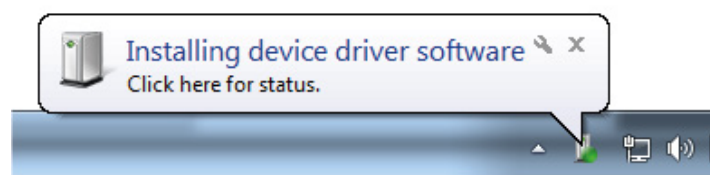


Entpacken Sie die Datei und installieren Sie die Software. Der Treiber für den K8019 wird in den Standard-Installationsordner kopiert.

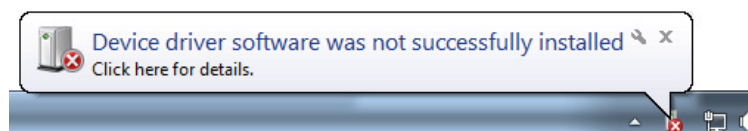
*In der 32-Bit-Version von Windows ist dies: C:\Program Files\Velleman\K8019\K8019 Driver.*

*In der 64-Bit-Version von Windows ist dies: C:\Program Files (x86)\Velleman\K8019\K8019 Driver.*

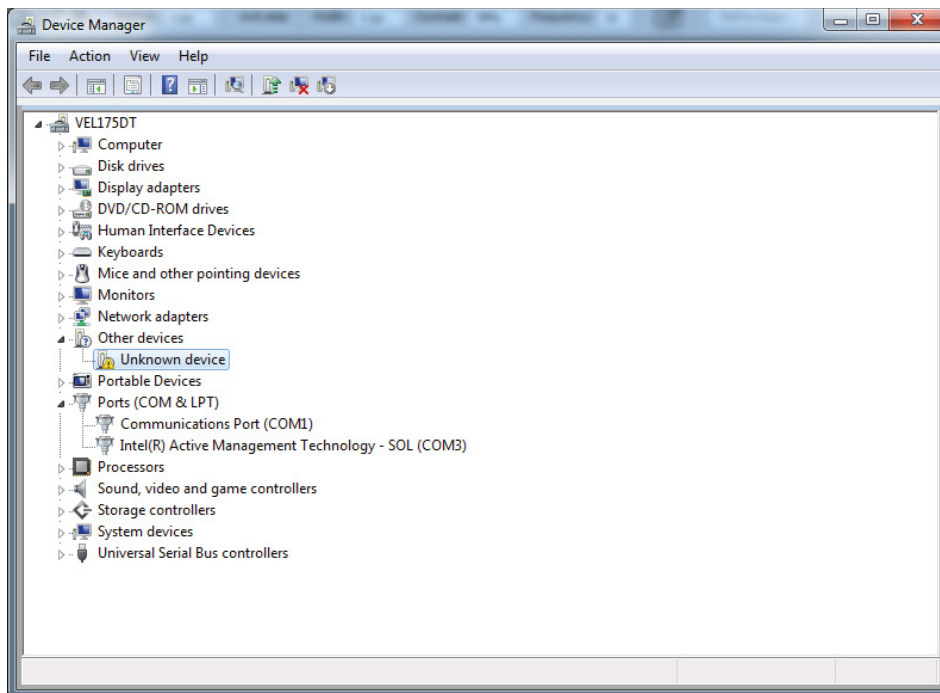
Nach der Installation, verbinden Sie den K8019 über das USB-Kabel mit dem Computer. Rechts unten erscheint folgendes:



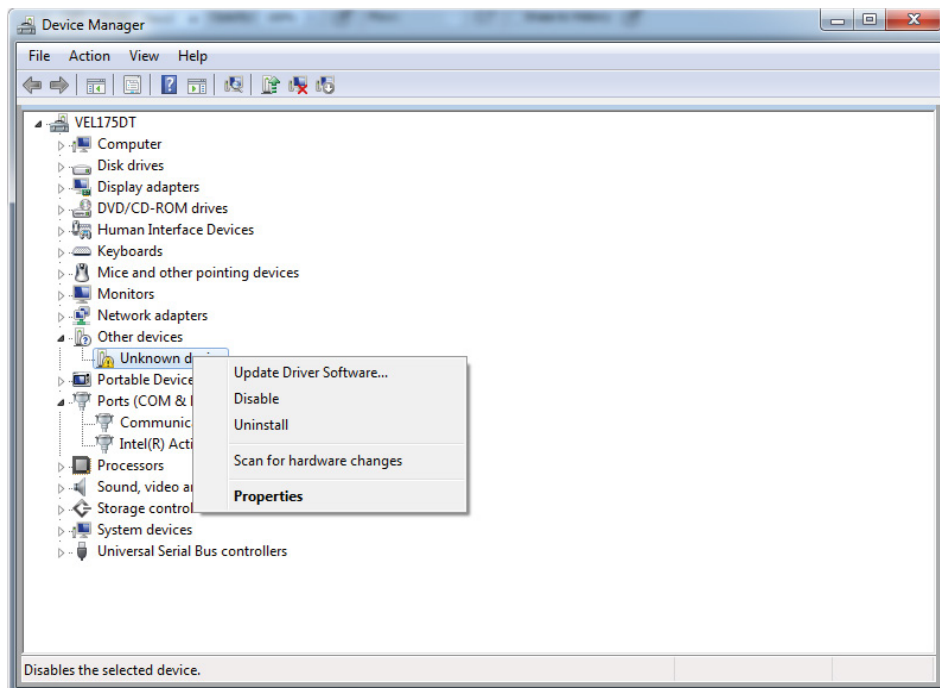
Warten Sie bis der Rechner versucht, den Treiber zu installieren. Die Installation schlägt fehl und folgende Sprechblase erscheint (Es kann eine Weile dauern, bevor Sie nachstehende Sprechblase sehen, denn Windows sucht einen Treiber im Internet):



Gehen Sie nun zu **Device Manager** (Drücken Sie die Start-Taste und suchen Sie “Device Manager”).

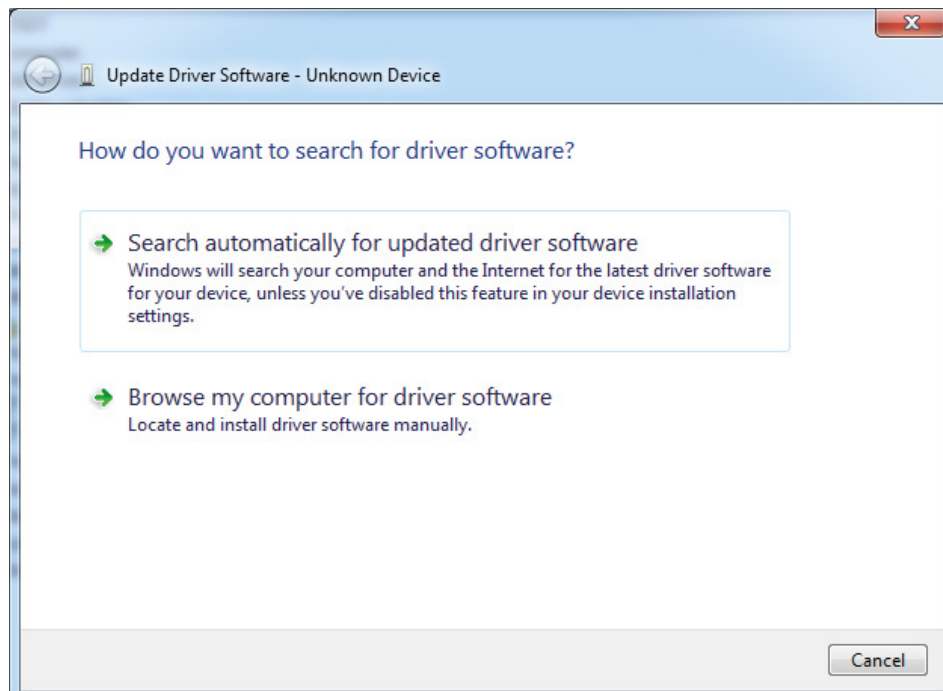


Wählen Sie K8019, Klicken Sie die rechte Maustaste auf und wählen Sie **Update Driver Software**.





Folgendes erscheint. Wählen Sie **Browse my computer for driver software**.



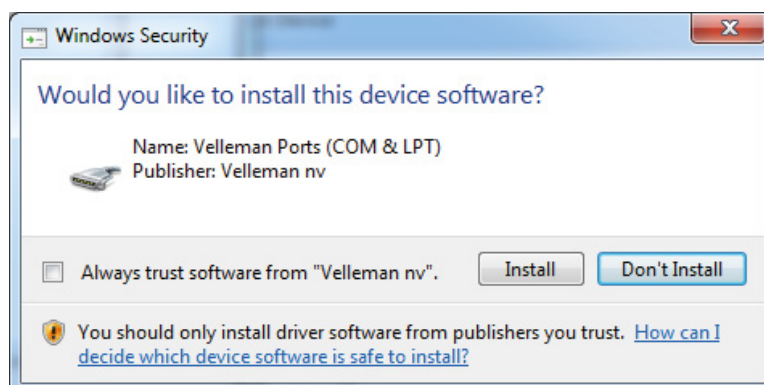
Navigieren Sie zu (32-Bit-Version):

**C:\Program Files\Velleman\K8019\K8019 Driver**

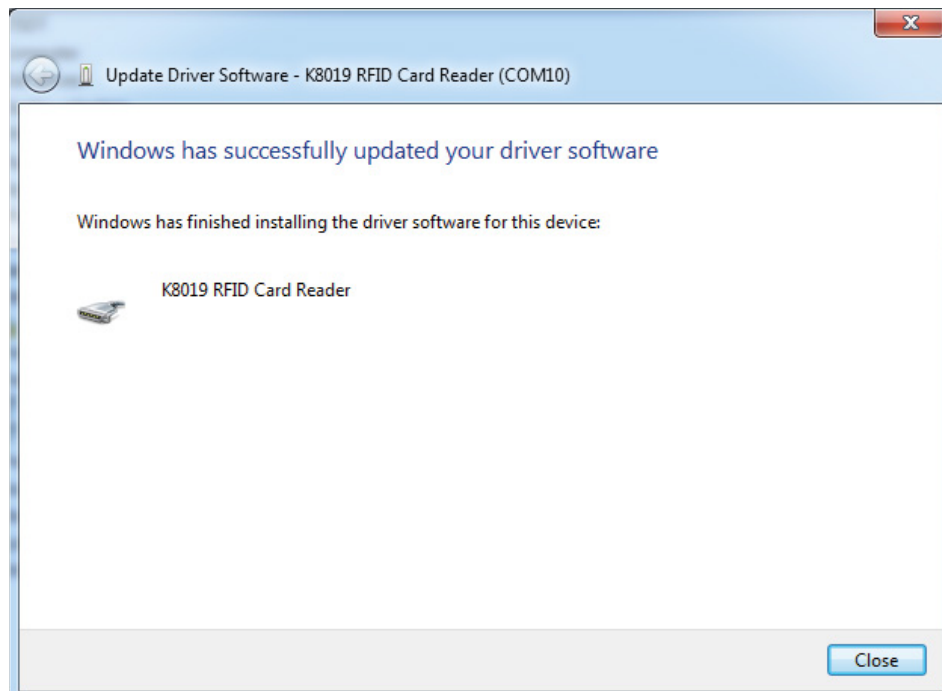
Navigieren Sie zu (64-Bit-Version):

**C:\Program Files (x86)\Velleman\K8019\K8019 Driver**

Klicken Sie auf OK. Erscheint folgendes Fenster, dann klicken Sie **Install this driver software anyway**.



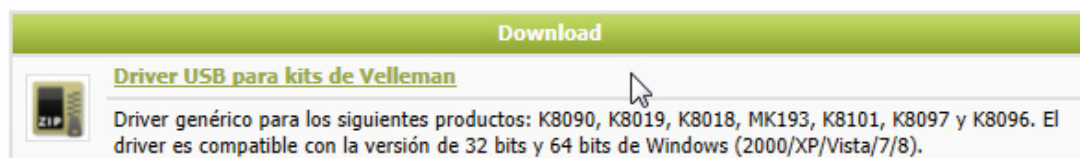
Windows installiert den Treiber. Nun können Sie den K8019 mit der Software verwenden!



# INSTALAR EL DRIVER

Descargue el “K8019\_setup” en:

[http://www.velleman.eu/downloads/files/downloads/K8019\\_setup.zip](http://www.velleman.eu/downloads/files/downloads/K8019_setup.zip)

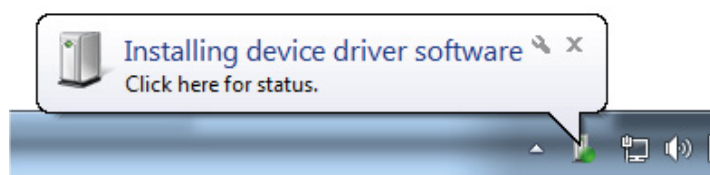


Desempaquete el archivo e instale el software. El driver para el K8019 se copia en la carpeta de instalación por defecto.

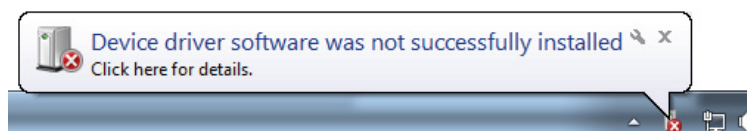
*En la versión de 32 bits de Windows es:* **C:\Program Files\Velleman\K8019\K8019 Driver.**

*En la versión de 64 bits de Windows es :* **C:\Program Files (x86)\Velleman\K8019\K8019 Driver.**

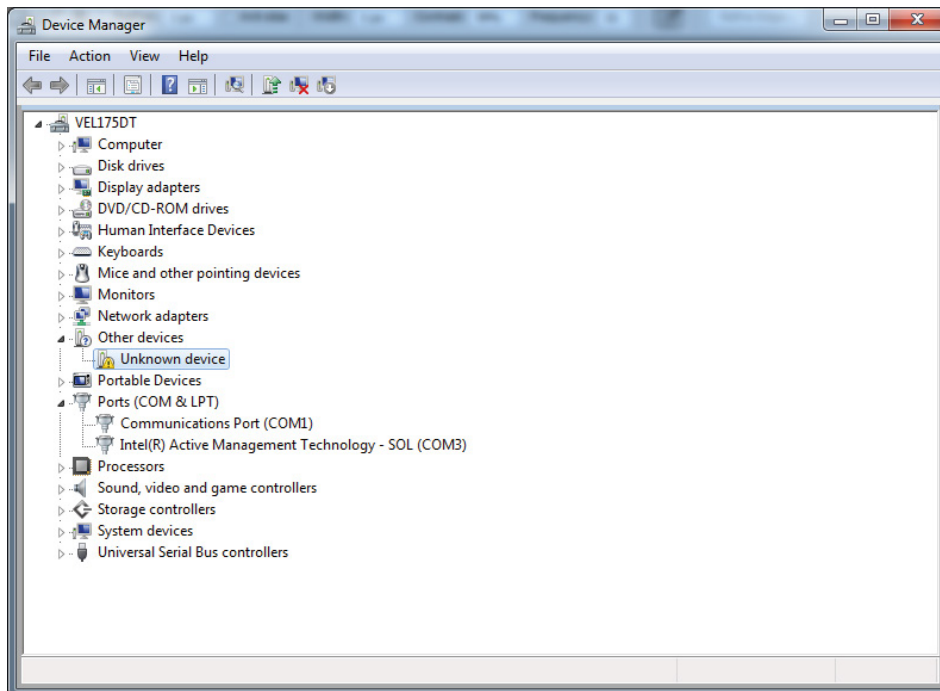
Después de la instalación, conecte el K8019 al ordenador con el cable USB. En la esquina inferior derecha se visualiza:



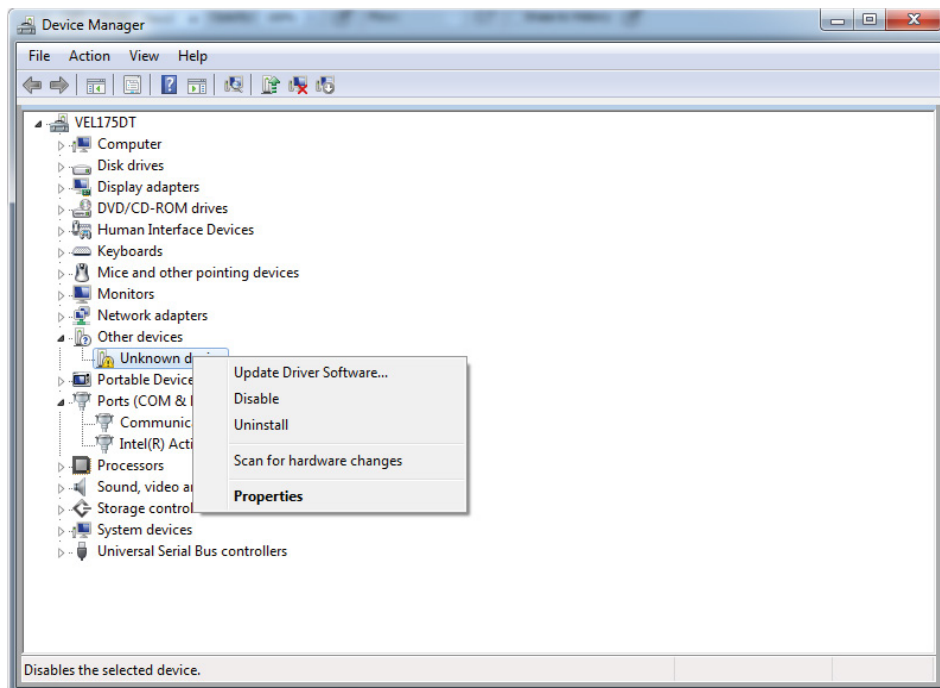
Espere hasta que el ordenador intente instalar el driver. La instalación falla y se visualiza el siguiente globo de texto (puede tardar un tiempo porque Windows está buscando un driver en internet):



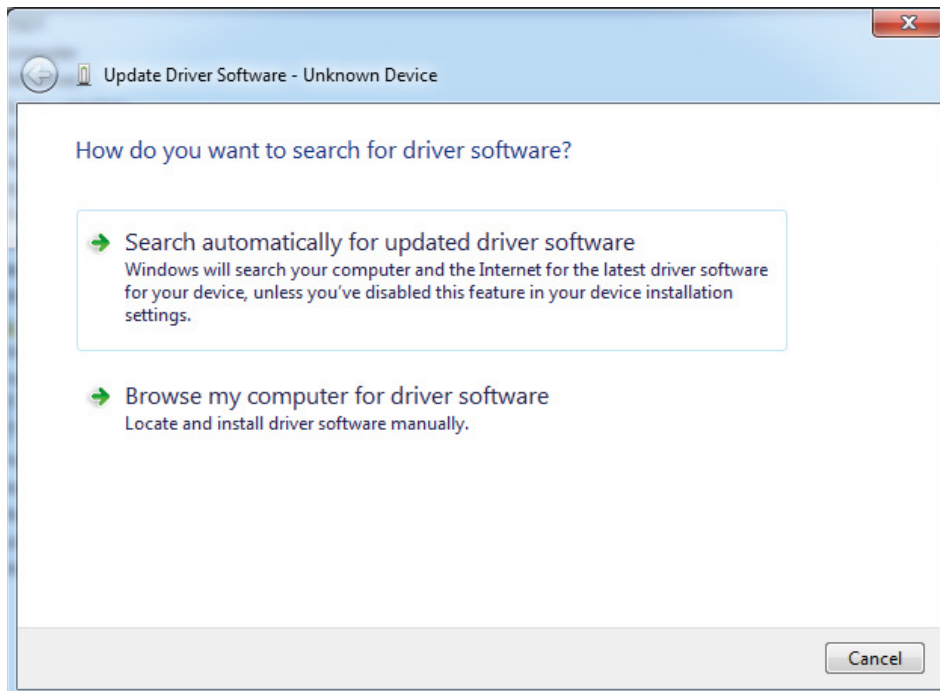
Ahora, vaya a **Device Manager** (pulse el botón de inicio y busque “Device Manager”).



Ahora, haga clic en **K8019** con el botón derecho del ratón y seleccione **Update Driver Software**.



Normalmente se visualiza lo siguiente. Seleccione **Browse my computer for driver software**.



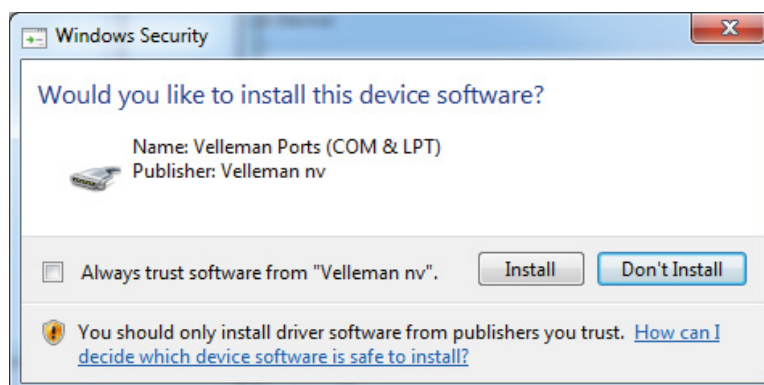
Busque (versión de 32 bits):

**C:\Program Files\Velleman\K8019\K8019 Driver**

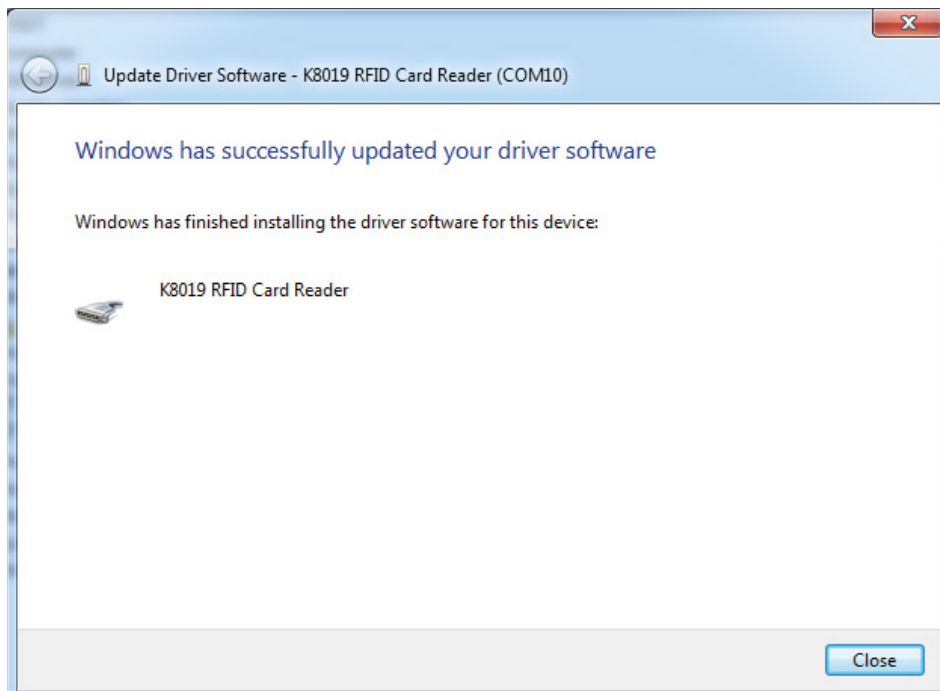
Busque (versión de 64 bits):

**C:\Program Files (x86)\Velleman\K8019\K8019 Driver**

Haga clic en OK. Si se visualiza la siguiente ventana, haga clic en **Install this driver software anyway**.



Windows instala el driver. ¡Ahora puede utilizar el K8019 con el software.







*Big Nippled Parametric Gyro Cube by smorloc*  
<http://www.thingiverse.com/thing:40760>



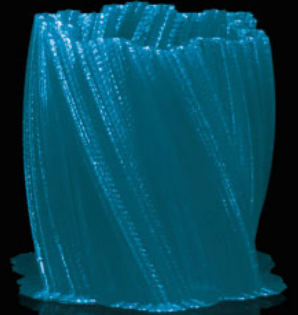
*Gear Bearing by emmett*  
<http://www.thingiverse.com/thing:53451>

**Did you ever dream  
of creating your own  
products?**

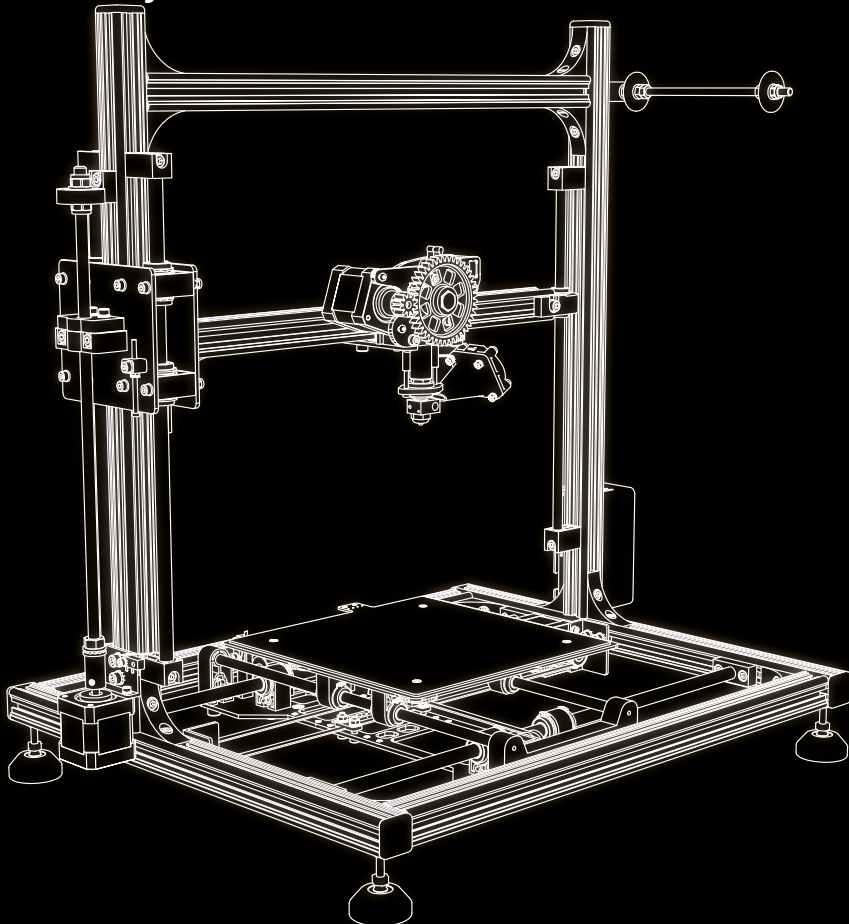
**Do you want your 3D  
digital creations to  
become real objects?**



*Koch Snowflake Vase 1 by sphynx*  
<http://www.thingiverse.com/thing:35246>



**This is your chance with the Velleman K8200.**



**3D  
PRINTER  
K8200**